

Datasheet for ABIN135423
anti-H-2Dd antibody (PE)



[Go to Product page](#)

1 Image

Overview

Quantity:	0.1 mg
Target:	H-2Dd
Reactivity:	Mouse
Host:	Mouse
Clonality:	Monoclonal
Conjugate:	This H-2Dd antibody is conjugated to PE
Application:	Flow Cytometry (FACS)

Product Details

Immunogen:	BDF1 mouse splenocytes
Clone:	34-5-8S
Isotype:	IgG2a
Specificity:	Mouse H-2Dd
Characteristics:	Mouse Anti-Mouse H-2Dd-PE

Target Details

Target:	H-2Dd
Alternative Name:	H-2Dd (H-2Dd Products)

Application Details

Application Notes:

Working Dilution:

FACS: 02 µg/10⁶ cells

Representative data are included in this product insert.

Each laboratory should determine an optimum working titer for use in its particular application.

Other applications have not been tested but use in such assays should not necessarily be excluded.

Comment:

Complement-dependent cytotoxicity, Blocking of antigen recognition, Immunoaffinity chromatography

Sample Volume:

1 mL

Restrictions:

For Research Use only

Handling

Buffer:

Product is supplied as 0.1 mg in 1.0 mL of PBS / NaN₃ and a stabilizing agent.

Handling Advice:

Do not freeze!

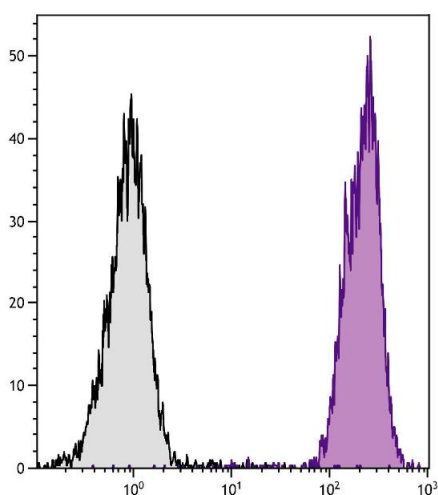
Protect conjugated products from light.

Each reagent is stable for the period shown on the bottle label if stored as directed.

Storage:

4 °C

Images



Flow Cytometry

Image 1. DBA/2 mouse splenocytes were stained with Mouse Anti-Mouse H-2Dd-PE.