

Datasheet for ABIN1354232

## FLYWCH1 Protein (AA 1-716) (GST tag)



[Go to Product page](#)

### 1 Image

#### Overview

Quantity:	25 µg
Target:	FLYWCH1
Protein Characteristics:	AA 1-716
Origin:	Human
Source:	Wheat germ
Protein Type:	Recombinant
Purification tag / Conjugate:	This FLYWCH1 protein is labelled with GST tag.
Application:	ELISA, Western Blotting (WB), Antibody Array (AA), Affinity Purification (AP)

#### Product Details

Purpose:	FLYWCH1 (Human) Recombinant Protein (P01)
Sequence:	MPLPEPSEQE GESVKAGQEP SPKPGTDVIP AAPRKPREFS KLVLLTASDQ DEDGVGSKPQ EVHCVLSLEM AGPATLASTL QILPVEEQGG VVQPALEMPE QKCSKLDAAA PQSLEFLRTP FGGRLLVLES FLYKQEKAVG DKVYWKCRQH AELGCRGRAI TRGLRATVMR GHCHAPDEQG LEARRQREKL PSLALPEGLG EPQGPEPGG RVEEPLEGVG PWQCPEEPEP TPGLVLSKPA LEEEEAPRAL SLLSLPPKKR SILGLGQARP LEFLRTCYGG SFLVHESFLY KREKAVGDKV YWTCDHALH GCRSRAITQG QRVTVMRGHC HQPDMEGLEA RRQKEKAVET LQAGQDGPQS QVDTLLRGVD SLLYRRGPGP LTLTRPRPRK RAKVEDQELP TQPEAPDEHQ DMDADPGGPE FLKTPLGGSF LVYESFLYRR EKAAGEKVYW TCRDQARMGC RSRAITQGRR VTVMRGHCHP PDLGGLEALR QREKRPNTAQ RGSPGGPEFL KTPLGGSFLV YESFLYRREK AAGEKVYWTC RDQARMGCRS RAITQGRRVM VMRRHCHPPD LGGLEALRQR EHFPNLAQWD SPDPLRPLEF LRTSLGGRFL VHESFLYRKE KAAGEKVYWM CRDQARLGCR SRAITQGHRI MVMRSHCHQP

## Product Details

---

DLAGLGALRQ RERLPTTAQQ EDPEKIQVQL CFKTCSPESQ QIYGDIKDVR LDGESQ

---

Characteristics: Human FLYWCH1 full-length ORF ( AAH28572.1, 1 a.a. - 716 a.a.) recombinant protein with GST-tag at N-terminal.

---

Purification: in vitro wheat germ expression system

---

## Target Details

---

Target: FLYWCH1

---

Alternative Name: FLYWCH1 ([FLYWCH1 Products](#))

---

Background: Full Gene Name: FLYWCH-type zinc finger 1

Synonyms:

---

Gene ID: 84256

---

## Application Details

---

Application Notes: Optimal working dilution should be determined by the investigator.

---

Comment: Preparation method: in vitro, wheat germ expression system  
Product Quality tested by: 12.5% SDS-PAGE Stained with Coomassie Blue.

---

Restrictions: For Research Use only

---

## Handling

---

Buffer: 50 mM Tris-HCl, 10 mM reduced Glutathione, pH =8.0 in the elution buffer.

---

Handling Advice: Aliquot to avoid repeated freezing and thawing.

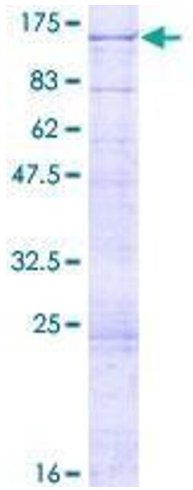
---

Storage: -80 °C

---

Storage Comment: Best use within three months from the date of receipt of this protein.

---



**Image 1.**