



[Go to Product page](#)

Datasheet for ABIN1354246

FM01 Protein (AA 1-532) (GST tag)

1 Image

Overview

Quantity:	10 µg
Target:	FM01
Protein Characteristics:	AA 1-532
Origin:	Human
Source:	Wheat germ
Protein Type:	Recombinant
Purification tag / Conjugate:	This FM01 protein is labelled with GST tag.
Application:	Western Blotting (WB), ELISA, Antibody Array (AA), Affinity Purification (AP)

Product Details

Purpose:	FM01 (Human) Recombinant Protein (P01)
Sequence:	MAKRVAIVGA GVSGLASIKC CLEEGLEPTC FERSDDLGLL WRFTEHVEEG RASLYKSWVS NSCKEMSCYS DFPFPEDYPN YVPNSQFLEY LKMYANHFDL LKHIQFKTKV CSVTKCSDSA VSGQWEVVTM HEEKQESAIF DAVMVCTGFL TNPYLPLDSF PGINAFKGQY FHSRQYKHPD IFKDKRVLVI GMGNSGTDIA VEASHLAEKV FLSTTGGGWV ISRIFDSGYW WDMVMFTRFQ NMLRNSLPTP IVTWLMERKI NNWLNHANYG LIPEDRTQLK EFVLNDELPG RIITGKVFIR PSIKEVKENS VIFNNTSKEE PIDIIVFATG YTFAFPFLDE SVVKVEDGQA SLYKYIFPAH LQKPTLAIIG LIKPLGSMIP TGETQARWAV RVLKGVNKLPP SVMIIEEIN ARKENKPSWF GLCYCKALQS DYITYIDELL TYINAKPNLF SMLLTDPHLA LTVFFGPCSP YQFRLTGPGK WEGARNAIMT QWDRTFKVIK ARVVQESPSP FESFLKVFSF LALLVAIFLI FL
Characteristics:	Human FM01 full-length ORF (AAH47129, 1 a.a. - 532 a.a.) recombinant protein with GST-tag at N-terminal.

Product Details

Purification: in vitro wheat germ expression system

Target Details

Target: FM01

Alternative Name: FM01 ([FM01 Products](#))

Background: Full Gene Name: flavin containing monooxygenase 1
Synonyms:

Gene ID: 2326

Application Details

Application Notes: Optimal working dilution should be determined by the investigator.

Comment: Preparation method: in vitro, wheat germ expression system
Product Quality tested by: 12.5% SDS-PAGE Stained with Coomassie Blue.

Restrictions: For Research Use only

Handling

Buffer: 50 mM Tris-HCl, 10 mM reduced Glutathione, pH =8.0 in the elution buffer.

Handling Advice: Aliquot to avoid repeated freezing and thawing.

Storage: -80 °C

Storage Comment: Best use within three months from the date of receipt of this protein.

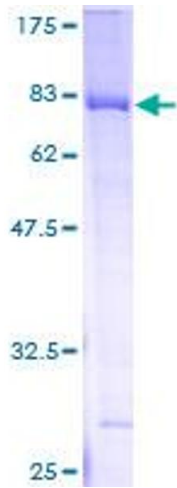


Image 1.