



[Go to Product page](#)

Datasheet for ABIN1354304

FOLR3 Protein (AA 1-245) (GST tag)

1 Image

Overview

Quantity:	25 µg
Target:	FOLR3
Protein Characteristics:	AA 1-245
Origin:	Human
Source:	Wheat germ
Protein Type:	Recombinant
Purification tag / Conjugate:	This FOLR3 protein is labelled with GST tag.
Application:	ELISA, Western Blotting (WB), Antibody Array (AA), Affinity Purification (AP)

Product Details

Purpose:	FOLR3 (Human) Recombinant Protein (P01)
Sequence:	MDMAWQMMQL LLLALVTAAG SAQPRSARAR TDLLNVCMNA KHHKTQPSPE DELYGQCSPW KKNACCTAST SQELHKDTSR LYNFNWDHCG KMEPTCKRHF IQDSCLYECS PNLGPWIRQV NQSWRKERIL NVPLCKEDCE RWWEDCRTSY TCKSNWHKGW NWTSGINECP AGALCSTFES YFPTPAALCE GLWSHSFKVS NYSRGSGRCI QMWFDQAQGN PNEEVAKFYA AAMNAGAPSR GIIDS
Characteristics:	Human FOLR3 full-length ORF (AAI48786.1, 1 a.a. - 245 a.a.) recombinant protein with GST-tag at N-terminal.
Purification:	in vitro wheat germ expression system

Target Details

Target:	FOLR3
Alternative Name:	FOLR3 (FOLR3 Products)
Background:	Full Gene Name: folate receptor 3 (gamma) Synonyms: FR-G,FR-gamma,gamma-hFR
Gene ID:	2352
Pathways:	Dicarboxylic Acid Transport

Application Details

Application Notes:	Optimal working dilution should be determined by the investigator.
Comment:	Preparation method: in vitro, wheat germ expression system Product Quality tested by: 12.5% SDS-PAGE Stained with Coomassie Blue.
Restrictions:	For Research Use only

Handling

Buffer:	50 mM Tris-HCl, 10 mM reduced Glutathione, pH =8.0 in the elution buffer.
Handling Advice:	Aliquot to avoid repeated freezing and thawing.
Storage:	-80 °C
Storage Comment:	Best use within three months from the date of receipt of this protein.

Images

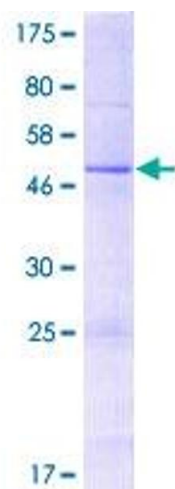


Image 1.