



[Go to Product page](#)

Datasheet for ABIN1354347

FOXD4L4 Protein (AA 317-416) (GST tag)

1 Image

Overview

Quantity:	10 µg
Target:	FOXD4L4
Protein Characteristics:	AA 317-416
Origin:	Human
Source:	Wheat germ
Protein Type:	Recombinant
Purification tag / Conjugate:	This FOXD4L4 protein is labelled with GST tag.
Application:	ELISA, Western Blotting (WB), Antibody Array (AA), Affinity Purification (AP)

Product Details

Purpose:	FOXD4L4 (Human) Recombinant Protein (Q01)
Sequence:	HREADASLSA LRVLCKGSGE RVQGLRRVCP RPRGATATCS SDHQACCIPK PLPLCCKCPP PLLLGQFCSN SSSIRRTAPT AALPPRARCW AGTCRPRRRC
Characteristics:	Human FOXD4L4 partial ORF (NP_954714.2, 317 a.a. - 416 a.a.) recombinant protein with GST-tag at N-terminal.
Purification:	in vitro wheat germ expression system

Target Details

Target:	FOXD4L4
Alternative Name:	FOXD4L4 (FOXD4L4 Products)

Target Details

Background: Full Gene Name: forkhead box D4-like 4
Synonyms: FOXD4b,bA460E7.2

Gene ID: 349334

NCBI Accession: [NM_199244](#)

Application Details

Application Notes: Optimal working dilution should be determined by the investigator.

Comment: Preparation method: in vitro, wheat germ expression system
Product Quality tested by: 12.5% SDS-PAGE Stained with Coomassie Blue.

Restrictions: For Research Use only

Handling

Buffer: 50 mM Tris-HCl, 10 mM reduced Glutathione, pH =8.0 in the elution buffer.

Handling Advice: Aliquot to avoid repeated freezing and thawing.

Storage: -80 °C

Storage Comment: Best use within three months from the date of receipt of this protein.

Images

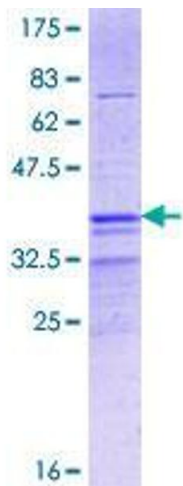


Image 1.