



[Go to Product page](#)

Datasheet for ABIN1354373

FOXM1 Protein (AA 702-801) (GST tag)

1 Image

Overview

Quantity:	10 µg
Target:	FOXM1
Protein Characteristics:	AA 702-801
Origin:	Human
Source:	Wheat germ
Protein Type:	Recombinant
Purification tag / Conjugate:	This FOXM1 protein is labelled with GST tag.
Application:	Western Blotting (WB), ELISA, Antibody Array (AA), Affinity Purification (AP)

Product Details

Purpose:	FOXM1 (Human) Recombinant Protein (Q01)
Sequence:	LQSAPPLESP QRLLSSEPLD LISVPFGNSS PSDIDVPKPG SPEPQVSGLA ANRSLTEGLV LDTMNDLSLK ILLDISFPGL DEDPLGPDNI NWSQFIPELQ
Characteristics:	Human FOXM1 partial ORF (NP_973731.1, 702 a.a. - 801 a.a.) recombinant protein with GST-tag at N-terminal.
Purification:	in vitro wheat germ expression system

Target Details

Target:	FOXM1
Alternative Name:	FOXM1 (FOXM1 Products)

Target Details

Background: Full Gene Name: forkhead box M1
Synonyms: FKHL16,FOXM1B,HFH-11,HFH11,HNF-3,INS-1,MPHOSPH2,MPP-2,MPP2,PIG29,TGT3,TRIDENT

Gene ID: 2305

NCBI Accession: [NM_202002](#)

Pathways: [Positive Regulation of Response to DNA Damage Stimulus](#)

Application Details

Application Notes: Optimal working dilution should be determined by the investigator.

Comment: Preparation method: in vitro, wheat germ expression system
Product Quality tested by: 12.5% SDS-PAGE Stained with Coomassie Blue.

Restrictions: For Research Use only

Handling

Buffer: 50 mM Tris-HCl, 10 mM reduced Glutathione, pH =8.0 in the elution buffer.

Handling Advice: Aliquot to avoid repeated freezing and thawing.

Storage: -80 °C

Storage Comment: Best use within three months from the date of receipt of this protein.

Images

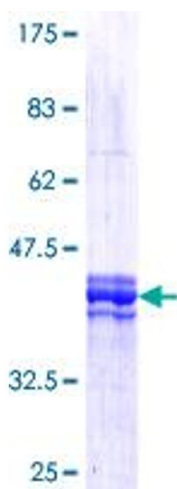


Image 1.