



[Go to Product page](#)

Datasheet for ABIN1354375

FOXM1 Protein (AA 22-110) (GST tag)

1 Image

Overview

| | |
|-------------------------------|---|
| Quantity: | 10 µg |
| Target: | FOXM1 |
| Protein Characteristics: | AA 22-110 |
| Origin: | Human |
| Source: | Wheat germ |
| Protein Type: | Recombinant |
| Purification tag / Conjugate: | This FOXM1 protein is labelled with GST tag. |
| Application: | Western Blotting (WB), ELISA, Antibody Array (AA), Affinity Purification (AP) |

Product Details

| | |
|------------------|---|
| Purpose: | FOXM1 (Human) Recombinant Protein (Q02) |
| Sequence: | NAPSETSEEE PKRSPAQQES NQAEASKEVA ESNCKFPAG IKIINHPTMP NTQVVAIPNN ANIHSIITAL TAKGKESGSS GPNKFILIS |
| Characteristics: | Human FOXM1 partial ORF (NP_973731, 22 a.a. - 110 a.a.) recombinant protein with GST-tag at N-terminal. |
| Purification: | in vitro wheat germ expression system |

Target Details

| | |
|-------------------|--|
| Target: | FOXM1 |
| Alternative Name: | FOXM1 (FOXM1 Products) |

Target Details

Background: Full Gene Name: forkhead box M1
Synonyms: FKHL16,FOXM1B,HFH-11,HFH11,HNF-3,INS-1,MPHOSPH2,MPP-2,MPP2,PIG29,TGT3,TRIDENT

Gene ID: 2305

NCBI Accession: [NM_202002](#)

Pathways: [Positive Regulation of Response to DNA Damage Stimulus](#)

Application Details

Application Notes: Optimal working dilution should be determined by the investigator.

Comment: Preparation method: in vitro, wheat germ expression system
Product Quality tested by: 12.5% SDS-PAGE Stained with Coomassie Blue

Restrictions: For Research Use only

Handling

Buffer: 50 mM Tris-HCl, 10 mM reduced Glutathione, pH =8.0 in the elution buffer.

Handling Advice: Aliquot to avoid repeated freezing and thawing.

Storage: -80 °C

Storage Comment: Best use within three months from the date of receipt of this protein.

Images

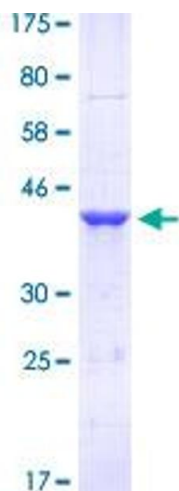


Image 1.