

Datasheet for ABIN1354387

FOXP1 Protein (AA 1-114) (GST tag)[Go to Product page](#)**1** Image

Overview

Quantity:	10 µg
Target:	FOXP1
Protein Characteristics:	AA 1-114
Origin:	Human
Source:	Wheat germ
Protein Type:	Recombinant
Purification tag / Conjugate:	This FOXP1 protein is labelled with GST tag.
Application:	Western Blotting (WB), ELISA, Antibody Array (AA), Affinity Purification (AP)

Product Details

Purpose:	FOXP1 (Human) Recombinant Protein (P01)
Sequence:	MMQESGTETK SNGSAIQNGS GGSNHLLECG GLREGSRNGE TPAVDIGAAD LAHAQQQQQQ WHLINHQPSR SPSSWLKRLI SSPWELEVLQ VPLWGAVAET KMSGPVCQPN PSPF
Characteristics:	Human FOXP1 full-length ORF (AAH05055, 1 a.a. - 114 a.a.) recombinant protein with GST-tag at N-terminal.
Purification:	in vitro wheat germ expression system

Target Details

Target:	FOXP1
Alternative Name:	FOXP1 (FOXP1 Products)

Target Details

Background:	Full Gene Name: forkhead box P1 Synonyms: 12CC4,FLJ23741,HSPC215,MGC12942,MGC88572,MGC99551,QRF1,hFKH1B
Gene ID:	27086
Pathways:	Chromatin Binding , Regulation of Muscle Cell Differentiation , Positive Regulation of Immune Effector Process , Production of Molecular Mediator of Immune Response

Application Details

Application Notes:	Optimal working dilution should be determined by the investigator.
Comment:	Preparation method: in vitro, wheat germ expression system Product Quality tested by: 12.5% SDS-PAGE Stained with Coomassie Blue.
Restrictions:	For Research Use only

Handling

Buffer:	50 mM Tris-HCl, 10 mM reduced Glutathione, pH =8.0 in the elution buffer.
Handling Advice:	Aliquot to avoid repeated freezing and thawing.
Storage:	-80 °C
Storage Comment:	Best use within three months from the date of receipt of this protein.

Images

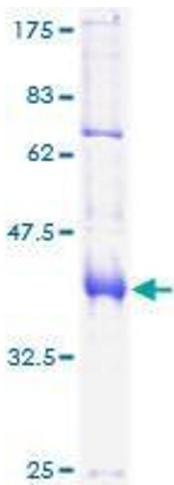


Image 1.