

Datasheet for ABIN1354432
FRMD5 Protein (AA 1-570) (GST tag)



[Go to Product page](#)

1 Image

Overview

Quantity:	10 µg
Target:	FRMD5
Protein Characteristics:	AA 1-570
Origin:	Human
Source:	Wheat germ
Protein Type:	Recombinant
Purification tag / Conjugate:	This FRMD5 protein is labelled with GST tag.
Application:	ELISA, Western Blotting (WB), Antibody Array (AA), Affinity Purification (AP)

Product Details

Purpose:	FRMD5 (Human) Recombinant Protein (P01)
Sequence:	<p>MLSRLMSGSS RSLEREYSCT VRLDDSEYT CTIQRDAKGQ YLFDLLCHHL NLEKDYFGI RFVDPDKQRH WLEFTKSVVK QLRSQPPFTM CFRVKFYFAD PAALKEEITR YLVFLQIKRD LYHGRLCKT SDAALLAAYI LQAEIGDYDS GKHPEGYSSK FQFFPKHSEK LERKIAEIHK TELSGQTPAT SELNFLRKAQ TLETYGVDPH PCKDVSGNAA FLAFTPFQFV VLQGNKRVHF IKWNEVTKLK FEGKTFYLYV SQKEEKIIL TYFAPTPEAC KHLWKCGIEN QAFYKLEKSS QVRTVSSSNL FFKGSRFRYS GRVAKEVMES SAKIKREPPE IHRAGMVPFR SCPSITHGPR LSSVPRTRRR AVHISIMEGL ESLRDSAHSR PVRSTSHGDT FLPHVRSRRT DSNERVAVIA DEAYSPADSV LPTPVAEHSR ELMLLSRQIN GATCSIEEEK ESEASTPTAT EVEALGGELR ALCQGHSGPE EEQVNFVLS VLRLLLVTMG LLFVLLLLLI ILTESDLIA FFRDIRQTPE FEQFHYQYFC PLRRWFACKI RSVVSLIDT</p>
Characteristics:	Human FRMD5 full-length ORF (NP_116281.2, 1 a.a. - 570 a.a.) recombinant protein with GST-

Product Details

tag at N-terminal.

Purification: in vitro wheat germ expression system

Target Details

Target: FRMD5

Alternative Name: FRMD5 ([FRMD5 Products](#))

Background: Full Gene Name: FERM domain containing 5
Synonyms: FLJ41022,MGC14161

Gene ID: 84978

NCBI Accession: [NM_032892](#)

Application Details

Application Notes: Optimal working dilution should be determined by the investigator.

Comment: Preparation method: in vitro, wheat germ expression system
Product Quality tested by: 12.5% SDS-PAGE Stained with Coomassie Blue.

Restrictions: For Research Use only

Handling

Buffer: 50 mM Tris-HCl, 10 mM reduced Glutathione, pH =8.0 in the elution buffer.

Handling Advice: Aliquot to avoid repeated freezing and thawing.

Storage: -80 °C

Storage Comment: Best use within three months from the date of receipt of this protein.

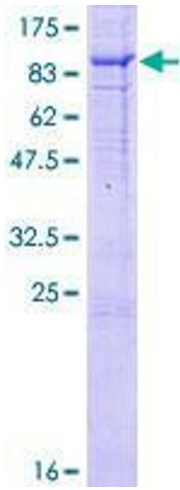


Image 1.