



[Go to Product page](#)

Datasheet for ABIN1354452

## FSD1L Protein (AA 1-145) (GST tag)

### 1 Image

#### Overview

Quantity:	10 µg
Target:	FSD1L
Protein Characteristics:	AA 1-145
Origin:	Human
Source:	Wheat germ
Protein Type:	Recombinant
Purification tag / Conjugate:	This FSD1L protein is labelled with GST tag.
Application:	ELISA, Western Blotting (WB), Antibody Array (AA), Affinity Purification (AP)

#### Product Details

Purpose:	FSD1L (Human) Recombinant Protein (P01)
Sequence:	MDSQKEALQR IISTLANKND EIQNFIDTLH HTLKGQVQENS SNILSELDEE FDSLYSILDE VKESMINCIK QEQARKSQEL QSQISQCNNA LENSELLEF ATRSLDIKEP EEFSKVHKNC INTLNKGSCI FKKAFLEFFS FGFLY
Characteristics:	Human FSD1L full-length ORF ( NP_114125.1, 1 a.a. - 145 a.a.) recombinant protein with GST-tag at N-terminal.
Purification:	in vitro wheat germ expression system

#### Target Details

Target:	FSD1L
Alternative Name:	FSD1L ( <a href="#">FSD1L Products</a> )

## Target Details

Background:	Full Gene Name: fibronectin type III and SPRY domain containing 1-like Synonyms: CCDC10,CSDUFD1,FSD1CL,FSD1NL,MGC45564,MIR1
Gene ID:	83856
NCBI Accession:	<a href="#">NM_031919</a>

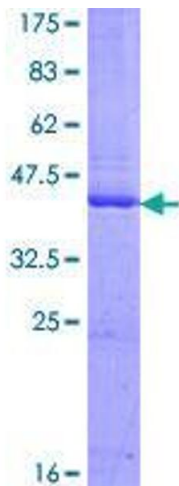
## Application Details

Application Notes:	Optimal working dilution should be determined by the investigator.
Comment:	Preparation method: in vitro, wheat germ expression system Product Quality tested by: 12.5% SDS-PAGE Stained with Coomassie Blue.
Restrictions:	For Research Use only

## Handling

Buffer:	50 mM Tris-HCl, 10 mM reduced Glutathione, pH =8.0 in the elution buffer.
Handling Advice:	Aliquot to avoid repeated freezing and thawing.
Storage:	-80 °C
Storage Comment:	Best use within three months from the date of receipt of this protein.

## Images



**Image 1.**