



[Go to Product page](#)

Datasheet for ABIN1354454

## FSD1L Protein (AA 1-311) (GST tag)

### 1 Image

#### Overview

Quantity:	10 µg
Target:	FSD1L
Protein Characteristics:	AA 1-311
Origin:	Human
Source:	Wheat germ
Protein Type:	Recombinant
Purification tag / Conjugate:	This FSD1L protein is labelled with GST tag.
Application:	ELISA, Western Blotting (WB), Antibody Array (AA), Affinity Purification (AP)

#### Product Details

Purpose:	FSD1L (Human) Recombinant Protein (P02)
Sequence:	MPEEDNKIDH FILEHRKTNF DGLPRVKDER CWEIIDNIKG TEYTL SGLKF DSKYMNFRVR ACNKAVAGEY SDPVTLETKA LNFNLDNSSS HLNLKVEDTC VEWDPTGGKG QESKIKGKEN KGRSGTPSPK RTSVGSRPPA VRGSRDRFTG ESYTVLGDTA IESGQHYWEV KAQKDCKSYS VGVAYKTLGK FDQLGKTNTS WCIHVNNWLQ NTFAAKHNNK VKALDVTVPE KIGVFCDFDG GQLSFYDANS KQLLYSFKTK FTQPVLPGFM VWCGGLSLST GMQVPSAVRT LQKSENGMTG SASSLNNVVT Q
Characteristics:	Human FSD1L full-length ORF ( AAH36746.1, 1 a.a. - 311 a.a.) recombinant protein with GST-tag at N-terminal.
Purification:	in vitro wheat germ expression system

## Target Details

Target:	FSD1L
Alternative Name:	FSD1L ( <a href="#">FSD1L Products</a> )
Background:	Full Gene Name: fibronectin type III and SPRY domain containing 1-like Synonyms: CCDC10,CSDUFD1,FSD1CL,FSD1NL,MGC45564,MIR1
Gene ID:	83856

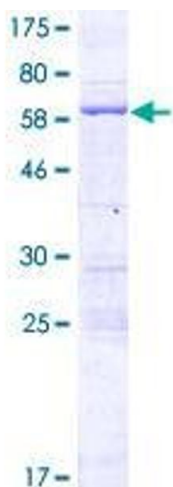
## Application Details

Application Notes:	Optimal working dilution should be determined by the investigator.
Comment:	Preparation method: in vitro, wheat germ expression system Product Quality tested by: 12.5% SDS-PAGE Stained with Coomassie Blue.
Restrictions:	For Research Use only

## Handling

Buffer:	50 mM Tris-HCl, 10 mM reduced Glutathione, pH =8.0 in the elution buffer.
Handling Advice:	Aliquot to avoid repeated freezing and thawing.
Storage:	-80 °C
Storage Comment:	Best use within three months from the date of receipt of this protein.

## Images



**Image 1.**