

Datasheet for ABIN1354469

FSTL4 Protein (AA 1-605) (GST tag)



[Go to Product page](#)

1 Image

Overview

Quantity:	10 µg
Target:	FSTL4
Protein Characteristics:	AA 1-605
Origin:	Human
Source:	Wheat germ
Protein Type:	Recombinant
Purification tag / Conjugate:	This FSTL4 protein is labelled with GST tag.
Application:	ELISA, Western Blotting (WB), Antibody Array (AA), Affinity Purification (AP)

Product Details

Purpose:	FSTL4 (Human) Recombinant Protein (P01)
Sequence:	<p>MKPGGFWLHL TLLGASLPAA LGWMDPGTSR GPDVGVGESQ AEEPRSFVET RREGLSSHNE LLASCGKKFC SRGSRVLSR KTGEPECQCL EACRPSYVPV CGSDGRFYEN HCKLHRAACL LGKRITVIHS KDCFLKGDTC TMAGYARLKN VLLALQTRLQ PLQEGDSRQD PASQKRLLVE SLFRDLADG NGHLSSELA QHVLKKQDLD EDLLGCSPGD LLRFDDYNSD SSSLTREFYI AFQVVQLSLA PEDRVSVTTV TVGLSTVLTC AVHGDLRPPI IWKRNGLTLN FLDLEDINDF GEDDSLITK VTTIHMGNYT CHASGHEQLF QTHVLQVNVP PVIRVYPESQ AQEPGVAASL RCHAEGIPMP RITWLKNGVD VSTQMSKQLS LLANGSELHI SSVRYEDTGA YTCIKNEVG VDEDISSFI EDSARKTLAN ILWREEGLSV GNMFYVFSDD GIIVHPVDC EIQRHLKPT KIFMSYEEIC PQREKNATQP CQWVSAVNVR NRYIYVAQPA LSRVLVVDIQ AQKVLQSIGV DPLPAKLSYD KSHDQVWVLS WGDVHKSRRPS LQVITEASTG QSQHLIRTPF AGVDDFFIPP INLEQ</p>
Characteristics:	Human FSTL4 full-length ORF (AAH24300.1, 1 a.a. - 605 a.a.) recombinant protein with GST-

Product Details

tag at N-terminal.

Purification: in vitro wheat germ expression system

Target Details

Target: FSTL4

Alternative Name: FSTL4 ([FSTL4 Products](#))

Background: Full Gene Name: follistatin-like 4
Synonyms:

Gene ID: 23105

Application Details

Application Notes: Optimal working dilution should be determined by the investigator.

Comment: Preparation method: in vitro, wheat germ expression system
Product Quality tested by: 12.5% SDS-PAGE Stained with Coomassie Blue.

Restrictions: For Research Use only

Handling

Buffer: 50 mM Tris-HCl, 10 mM reduced Glutathione, pH =8.0 in the elution buffer.

Handling Advice: Aliquot to avoid repeated freezing and thawing.

Storage: -80 °C

Storage Comment: Best use within three months from the date of receipt of this protein.

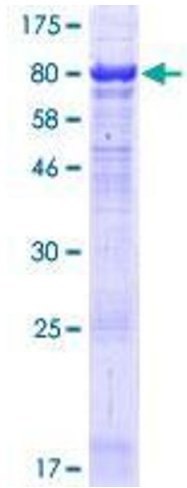


Image 1.