

Datasheet for ABIN135447
anti-ICAM2 antibody (FITC)[Go to Product page](#)

1 Image

Overview

Quantity:	0.5 mg
Target:	ICAM2
Reactivity:	Mouse
Host:	Rat
Clonality:	Monoclonal
Conjugate:	This ICAM2 antibody is conjugated to FITC
Application:	Flow Cytometry (FACS)

Product Details

Immunogen:	COS cells transfected with mouse ICAM-2 cDNA and BW5147 AKR/J mouse thymoma cell line
Clone:	3C4
Isotype:	IgG2a
Specificity:	Mouse CD102, Mr 55 kDa
Characteristics:	Rat Anti-Mouse CD102-FITC

Target Details

Target:	ICAM2
Alternative Name:	CD102 (ICAM2 Products)

Application Details

Application Notes:	<ul style="list-style-type: none">• Applications: FC - Quality tested , IHC-FS - Reported in literature , ICC - Reported in literature , IP - Reported in literature , Block - Reported in literature• Working Dilutions: Flow Cytometry Purified (UNLB) antibody 1 g/106 cells FITC, BIOT, AF488, and PACBLU conjugates 1 g/106 cells PE, AF647, and AF700 conjugates 0.2 g/106 cells For flow cytometry, the suggested use of these reagents is in a final volume of 100 L
--------------------	---

Comment: In vitro blocking assays

Sample Volume: 1 mL

Restrictions: For Research Use only

Handling

Concentration: 0.5 mg/mL

Buffer: 0.5 mg or 0.1 mg in 1.0 mL of PBS/Sodium azide

Preservative: Sodium azide

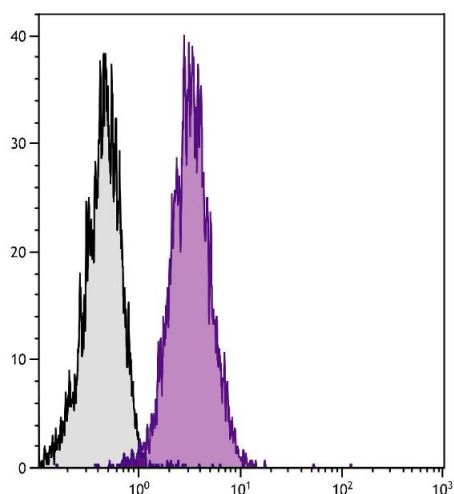
Precaution of Use: This product contains Sodium azide: a POISONOUS AND HAZARDOUS SUBSTANCE which should be handled by trained staff only.

Handling Advice: **Protect conjugated products from light.**
Each reagent is stable for the period shown on the bottle label if stored as directed.

Storage: 4 °C

Storage Comment: Store at 2-8°C

Images



Flow Cytometry

Image 1. BALB/c mouse splenocytes were stained with Rat Anti-Mouse CD102-FITC.