

Datasheet for ABIN1354475  
**FTH1 Protein (AA 1-183) (GST tag)**



[Go to Product page](#)

1 Image

Overview

Quantity:	10 µg
Target:	FTH1
Protein Characteristics:	AA 1-183
Origin:	Human
Source:	Wheat germ
Protein Type:	Recombinant
Purification tag / Conjugate:	This FTH1 protein is labelled with GST tag.
Application:	Western Blotting (WB), ELISA, Antibody Array (AA), Affinity Purification (AP)

Product Details

Purpose:	FTH1 (Human) Recombinant Protein (P01)
Sequence:	MTTASTSQVR QNYHQDSEAA INRQINQELY ASYVYLSMSY YFDRDDVALK NFAKYFLHQS HEEREHAEKL MKLQNQRGGR IFLQDIKKPD CDDWESGLNA MECALHLEKN VNQSLLELHK LATDKNDPHL CDFIETHYLN EQVKAIKELG DHVTNLRKMG APESGLAEYL FDKHTLGDS D NES
Characteristics:	Human FTH1 full-length ORF ( AAH11359, 1 a.a. - 183 a.a.) recombinant protein with GST-tag at N-terminal.
Purification:	in vitro wheat germ expression system

Target Details

Target:	FTH1
Alternative Name:	FTH1 ( <a href="#">FTH1 Products</a> )

## Target Details

Background:	Full Gene Name: ferritin, heavy polypeptide 1 Synonyms: FHC,FTH,FTHL6,MGC104426,PIG15,PLIF
Gene ID:	2495
Pathways:	<a href="#">Transition Metal Ion Homeostasis</a>

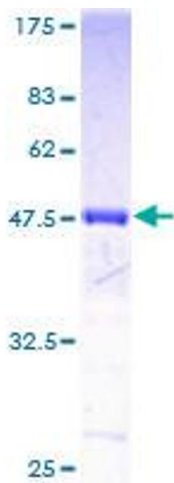
## Application Details

Application Notes:	Optimal working dilution should be determined by the investigator.
Comment:	Preparation method: in vitro, wheat germ expression system Product Quality tested by: 12.5% SDS-PAGE Stained with Coomassie Blue.
Restrictions:	For Research Use only

## Handling

Buffer:	50 mM Tris-HCl, 10 mM reduced Glutathione, pH =8.0 in the elution buffer.
Handling Advice:	Aliquot to avoid repeated freezing and thawing.
Storage:	-80 °C
Storage Comment:	Best use within three months from the date of receipt of this protein.

## Images



**Image 1.**