



[Go to Product page](#)

Datasheet for ABIN1354490

CMTR1 Protein (AA 1-835) (GST tag)

1 Image

Overview

Quantity:	10 µg
Target:	CMTR1
Protein Characteristics:	AA 1-835
Origin:	Human
Source:	Wheat germ
Protein Type:	Recombinant
Purification tag / Conjugate:	This CMTR1 protein is labelled with GST tag.
Application:	ELISA, Western Blotting (WB), Antibody Array (AA), Affinity Purification (AP)

Product Details

Purpose:	KIAA0082 (Human) Recombinant Protein (P01)
Sequence:	<p>MKRRTDPECT APIKKQKKRV AELALSLSST SDDEPPSSVS HGAKASTTSL SGSDSETEGK</p> <p>QHSSDSFDDA FKADSLVEGT SSRYSMYSV SQKLMAKMGF REGEGLGKYS QGRKDIVEAS</p> <p>SQKGRRGLGL TLRGFDQELN VDWRDEPEPS ACEQVSWFPE CTTEIPDTQE MSDWMMVVGKR</p> <p>KMIIEDETEF CGEELLHSVL QCKSVFDVLD GEEMRRARTR ANPYEMIRGV FFLNRAAMKM</p> <p>ANMDFVFDRM FTNPRDSYGK PLVKDREAEL LYFADVCAGP GGFSEYVLWR KKWHAKGFGM</p> <p>TLKGPNDFKL EDFYSASSEL FEPYEGGGI DGDGDITRPE NISAFRNFVL DNTDRKGVHF</p> <p>LMADGGFSVE GQENLQEILS KQLLLCQLM ALSIVRTGGH FICKTFDLFT PFSVGLVYLL</p> <p>YCCFERVCLF KPITSRPANS ERYVCKGLK VGIDDVRDYL FAVNIKLNQL RNTDSVDNLV</p> <p>VPLEVIKGDH EFTDYMIRSN ESHCSLQIKA LAKIHAFVQD TTLSEPRQAE IRKECLRLWG</p> <p>IPDQARVAPS SSDPKSKFFE LIQGTEIDIF SYKPTLLTSK TLEKIRPVFD YRCMVGSGEQ</p> <p>KFLIGLGKSQ IYTDWGRQSD RWIKLDLKTE LPRDTLLSVE IVHELKGEKG AQRKISAIHI</p>

Product Details

LDVVLVNGTD VREQHFNQRI QLAEKFKAV SKPSRPDMNP IRVKEVYRLE EMEKIFVRLE
MKIIKGSSGT PKLSYTGRDD RHFVPMGLYI VRTVNEPWMTM GFSKSFKKKF FYNKTKDST
FDLPADSIAP FHICYGRLF WEWGDGIRVH DSQKPQDQDK LSKEDVLSFI QMHRA

Characteristics: Human KIAA0082 full-length ORF (NP_055865.1, 1 a.a. - 835 a.a.) recombinant protein with GST-tag at N-terminal.

Purification: in vitro wheat germ expression system

Target Details

Target: CMTR1

Alternative Name: FTSJD2 ([CMTR1 Products](#))

Background: Full Gene Name: FtsJ methyltransferase domain containing 2
Synonyms: FLJ22156,KIAA0082

Gene ID: 23070

NCBI Accession: [NM_015050](#)

Application Details

Application Notes: Optimal working dilution should be determined by the investigator.

Comment: Preparation method: in vitro, wheat germ expression system
Product Quality tested by: 12.5% SDS-PAGE Stained with Coomassie Blue.

Restrictions: For Research Use only

Handling

Buffer: 50 mM Tris-HCl, 10 mM reduced Glutathione, pH =8.0 in the elution buffer.

Handling Advice: Aliquot to avoid repeated freezing and thawing.

Storage: -80 °C

Storage Comment: Best use within three months from the date of receipt of this protein.

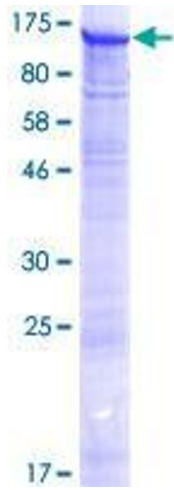


Image 1.