

Datasheet for ABIN1354519
SRSF10 Protein (AA 1-100) (GST tag)



[Go to Product page](#)

1 Image

Overview

Quantity:	10 µg
Target:	SRSF10
Protein Characteristics:	AA 1-100
Origin:	Human
Source:	Wheat germ
Protein Type:	Recombinant
Purification tag / Conjugate:	This SRSF10 protein is labelled with GST tag.
Application:	ELISA, Western Blotting (WB), Antibody Array (AA), Affinity Purification (AP)

Product Details

Purpose:	FUSIP1 (Human) Recombinant Protein (Q01)
Sequence:	MSRYLRPPNT SLFVRNVADD TRSEDLRREF GRYGPIVDVY VPLDFYTRRP RGFAYVQFED VRDAEDALHN LDRKWICGRQ IEIQFAQGDR KTPNQMKAKE
Characteristics:	Human FUSIP1 partial ORF (AAH05039, 1 a.a. - 100 a.a.) recombinant protein with GST-tag at N-terminal.
Purification:	in vitro wheat germ expression system

Target Details

Target:	SRSF10
Alternative Name:	FUSIP1 (SRSF10 Products)

Target Details

Background:	Full Gene Name: FUS interacting protein (serine/arginine-rich) 1 Synonyms: FUSIP2,NSSR,SFRS13,SRp38,SRp40,TASR,TASR1,TASR2
Gene ID:	10772
Pathways:	Ribonucleoprotein Complex Subunit Organization

Application Details

Application Notes:	Optimal working dilution should be determined by the investigator.
Comment:	Preparation method: in vitro, wheat germ expression system Product Quality tested by: 12.5% SDS-PAGE Stained with Coomassie Blue.
Restrictions:	For Research Use only

Handling

Buffer:	50 mM Tris-HCl, 10 mM reduced Glutathione, pH =8.0 in the elution buffer.
Handling Advice:	Aliquot to avoid repeated freezing and thawing.
Storage:	-80 °C
Storage Comment:	Best use within three months from the date of receipt of this protein.

Images

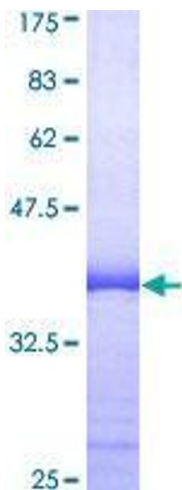


Image 1.