

Datasheet for ABIN135456

**anti-RLA-DQ antibody**[Go to Product page](#)**1** Image

## Overview

Quantity:	0.5 mg
Target:	RLA-DQ
Reactivity:	Rabbit
Host:	Mouse
Clonality:	Monoclonal
Conjugate:	This RLA-DQ antibody is un-conjugated
Application:	Flow Cytometry (FACS)

## Product Details

Immunogen:	Rabbit spleen cells
Clone:	2C4
Isotype:	IgG2a
Specificity:	Rabbit RLA-DQ
Characteristics:	Mouse Anti-Rabbit RLA-DQ-UNLB
Purification:	Purified

## Target Details

Target:	RLA-DQ
Abstract:	<a href="#">RLA-DQ Products</a>

# Application Details

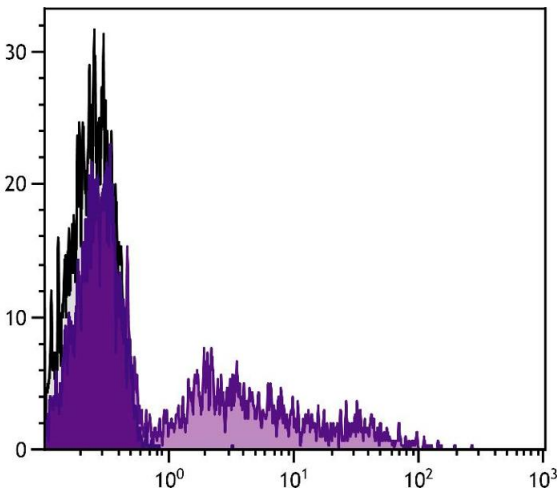
Application Notes:	<ul style="list-style-type: none"><li>• <b>Applications:</b> FC - Quality tested , IHC-FS - Reported in literature , IHC-PS - Reported in literature , IHC-WM - Reported in literature , ICC - Reported in literature , ELISA - Reported in literature , WB - Reported in literature , IP - Reported in literature , Block - Reported in literature</li><li>• <b>Working Dilutions:</b> Flow Cytometry FITC and BIOT conjugates 1 g/106 cells PE conjugate 0.2 g/106 cells For flow cytometry, the suggested use of these reagents is in a final volume of 100 L</li></ul>
--------------------	--

Sample Volume:	1 mL
Restrictions:	For Research Use only

## Handling

Concentration:	0.5 mg/mL
Buffer:	0.5 mg of purified immunoglobulin in 1.0 mL of borate buffered saline, pH 8.2. No preservatives or amine-containing buffer salts added
Preservative:	Without preservative
Handling Advice:	Each reagent is stable for the period shown on the bottle label if stored as directed.
Storage:	4 °C
Storage Comment:	Store at 2-8°C

## Images



**Flow Cytometry**

**Image 1.** Rabbit peripheral blood lymphocytes were stained with Mouse Anti-Rabbit RLA-DQ-FITC.