



[Go to Product page](#)

Datasheet for ABIN1354571

## FYTTD1 Protein (AA 1-318) (GST tag)

### 1 Image

#### Overview

Quantity:	25 µg
Target:	FYTTD1
Protein Characteristics:	AA 1-318
Origin:	Human
Source:	Wheat germ
Protein Type:	Recombinant
Purification tag / Conjugate:	This FYTTD1 protein is labelled with GST tag.
Application:	ELISA, Western Blotting (WB), Antibody Array (AA), Affinity Purification (AP)

#### Product Details

Purpose:	FYTTD1 (Human) Recombinant Protein (P01)
Sequence:	MNRFGTRLVG ATATSSPPPK ARSNENLDKI DMSLDDIIKL NRKEGKKQNF PRLNRRLLQQ SGAQQFRMRV RWGIQQNSGF GKTSLNRRGR VMPGKRRPNG VITGLAARKT TGIRKGISPM NRPLSDKNI EQYFPVLKRK ANLLRQNEGQ RKPVAVLKRP SQLSRKNNIP ANFTRSGNKL NHQKDTRQAT FLFRRGLKVQ AQLNTEQLLD DVVAKRTRQW RTSTTNGGIL TVSIDNPGAV QCPVTQKPR LTRTAVPSFLT KREQSDVKKV PKGVPLQFDI NSVGKQTGMT LNERFGILKE QRATLTYNKG GSRFVTVG
Characteristics:	Human FYTTD1 full-length ORF ( NP_115664.2, 1 a.a. - 318 a.a.) recombinant protein with GST-tag at N-terminal.
Purification:	in vitro wheat germ expression system

## Target Details

Target:	FYTTD1
Alternative Name:	FYTTD1 ( <a href="#">FYTTD1 Products</a> )
Background:	Full Gene Name: forty-two-three domain containing 1 Synonyms: DKFZp761B1514
Gene ID:	84248
NCBI Accession:	<a href="#">NM_032288</a>

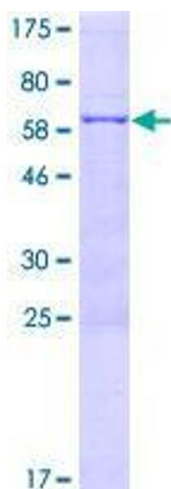
## Application Details

Application Notes:	Optimal working dilution should be determined by the investigator.
Comment:	Preparation method: in vitro, wheat germ expression system Product Quality tested by: 12.5% SDS-PAGE Stained with Coomassie Blue.
Restrictions:	For Research Use only

## Handling

Buffer:	50 mM Tris-HCl, 10 mM reduced Glutathione, pH =8.0 in the elution buffer.
Handling Advice:	Aliquot to avoid repeated freezing and thawing.
Storage:	-80 °C
Storage Comment:	Best use within three months from the date of receipt of this protein.

## Images



**Image 1.**