



[Go to Product page](#)

Datasheet for ABIN1354589

## FZD7 Protein (AA 155-253) (GST tag)

### 1 Image

#### Overview

Quantity:	10 µg
Target:	FZD7
Protein Characteristics:	AA 155-253
Origin:	Human
Source:	Wheat germ
Protein Type:	Recombinant
Purification tag / Conjugate:	This FZD7 protein is labelled with GST tag.
Application:	Western Blotting (WB), ELISA, Antibody Array (AA), Affinity Purification (AP)

#### Product Details

Purpose:	FZD7 (Human) Recombinant Protein (Q01)
Sequence:	GAGEICVGQN TSDGSGGPGG GPTAYPTAPY LPDLPFTALP PGASDGRGRP AFPFSCPRQL KVPPYLG YRF LGERDCGAPC EPGRANGLMY FKEEERFA
Characteristics:	Human FZD7 partial ORF ( NP_003498.1, 155 a.a. - 253 a.a.) recombinant protein with GST-tag at N-terminal.
Purification:	in vitro wheat germ expression system

#### Target Details

Target:	FZD7
Alternative Name:	FZD7 ( <a href="#">FZD7 Products</a> )

## Target Details

Background:	Full Gene Name: frizzled homolog 7 (Drosophila) Synonyms: FzE3
Gene ID:	8324
NCBI Accession:	<a href="#">NM_003507</a>
Pathways:	<a href="#">WNT Signaling, Stem Cell Maintenance</a>

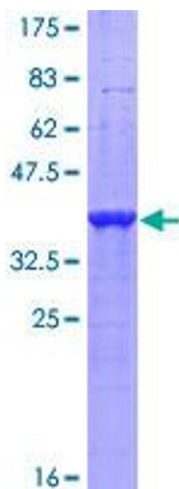
## Application Details

Application Notes:	Optimal working dilution should be determined by the investigator.
Comment:	Preparation method: in vitro, wheat germ expression system Product Quality tested by: 12.5% SDS-PAGE Stained with Coomassie Blue.
Restrictions:	For Research Use only

## Handling

Buffer:	50 mM Tris-HCl, 10 mM reduced Glutathione, pH =8.0 in the elution buffer.
Handling Advice:	Aliquot to avoid repeated freezing and thawing.
Storage:	-80 °C
Storage Comment:	Best use within three months from the date of receipt of this protein.

## Images



**Image 1.**