

## Datasheet for ABIN135459 **anti-RLA-DQ antibody (PE)**



[Go to Product page](#)

### 1 Image

#### Overview

Quantity:	0.1 mg
Target:	RLA-DQ
Reactivity:	Rabbit
Host:	Mouse
Clonality:	Monoclonal
Conjugate:	This RLA-DQ antibody is conjugated to PE
Application:	Flow Cytometry (FACS)

#### Product Details

Immunogen:	Rabbit spleen cells
Clone:	2C4
Isotype:	IgG2a
Specificity:	Rabbit RLA-DQ
Characteristics:	Mouse Anti-Rabbit RLA-DQ-PE

#### Target Details

Target:	RLA-DQ
Abstract:	<a href="#">RLA-DQ Products</a>

## Application Details

### Application Notes:

- **Applications:** FC - Quality tested , IHC-FS - Reported in literature , IHC-PS - Reported in literature , IHC-WM - Reported in literature , ICC - Reported in literature , ELISA - Reported in literature , WB - Reported in literature , IP - Reported in literature , Block - Reported in literature
- **Working Dilutions:** Flow Cytometry FITC and BIOT conjugates 1 g/106 cells PE conjugate 0.2 g/106 cells For flow cytometry, the suggested use of these reagents is in a final volume of 100 L

### Sample Volume:

1 mL

### Restrictions:

For Research Use only

## Handling

### Concentration:

0.1 mg/mL

### Buffer:

0.1 mg in 1.0 mL of PBS/Sodium azide and a stabilizing agent

### Preservative:

Sodium azide

### Precaution of Use:

This product contains Sodium azide: a POISONOUS AND HAZARDOUS SUBSTANCE which should be handled by trained staff only.

### Handling Advice:

**Do not freeze!**

**Protect conjugated products from light.**

Each reagent is stable for the period shown on the bottle label if stored as directed.

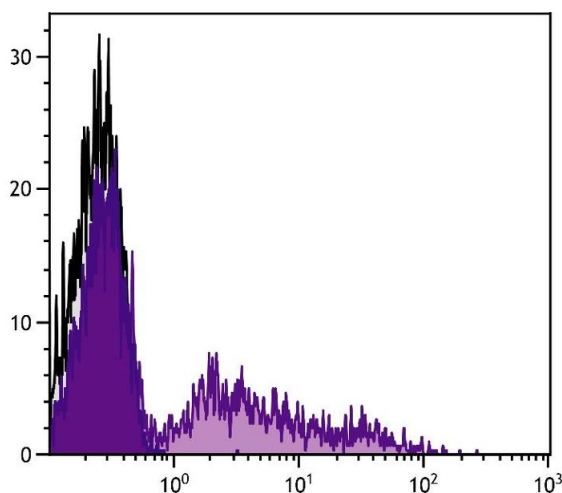
### Storage:

4 °C

### Storage Comment:

Store at 2-8°C

## Validation report #101185 for Enzyme Immunoassay (EIA)



### Flow Cytometry

**Image 1.** Rabbit peripheral blood lymphocytes were stained with Mouse Anti-Rabbit RLA-DQ-FITC.