



[Go to Product page](#)

Datasheet for ABIN1354599

G3BP1 Protein (AA 1-466) (GST tag)

1 Image

Overview

Quantity:	10 µg
Target:	G3BP1
Protein Characteristics:	AA 1-466
Origin:	Human
Source:	Wheat germ
Protein Type:	Recombinant
Purification tag / Conjugate:	This G3BP1 protein is labelled with GST tag.
Application:	ELISA, Western Blotting (WB), Antibody Array (AA), Affinity Purification (AP)

Product Details

Purpose:	G3BP (Human) Recombinant Protein (P01)
Sequence:	MVMEKPSPLL VGREFVRQYY TLLNQAPDML HRFYGKNSSY VHGGLDNSNGK PADAVYGQKE IHRKVM SQNF TNCHTKIRHV DAHATLNDGV VVQVMGLLSN NNQALRRFMQ TFVLAPEGSV ANKFYVHNDI FRYQDEVFGG FVTEPQEESE EEVEEPEERQ QTPEVVPDDS GTFYDQAVVS NDMEEHLEEP VAEPEPDPEP EPEQEPVSEI QEEKPEPVLE ETAPEDAQKS SSPAPADIAQ TVQEDLRTFS WASVTSKNLP PSGAVPVTGI PPHVVKVPAS QRPESKPES QIPPQRPQRD QRVREQRINI PPQRGPRPIR EAGEQGDIEP RRMVRHPDSH QLFIGNLPHE VDKSELKDFE QSYGNVVELR INSGGKLPNF GFVVFDSEPVQKVLNSRPI MFRGEVRLNV EEKTRAARE GDRRDNRLRG PGGPRGGLGG GMRGPPRGGM VQKPGFGVGR GLAPRQ
Characteristics:	Human G3BP full-length ORF (NP_005745.1, 1 a.a. - 466 a.a.) recombinant protein with GST-tag at N-terminal.

Product Details

Purification: in vitro wheat germ expression system

Target Details

Target: G3BP1

Alternative Name: G3BP1 ([G3BP1 Products](#))

Background: Full Gene Name: GTPase activating protein (SH3 domain) binding protein 1
Synonyms: G3BP,HDH-VIII,MGC111040

Gene ID: 10146

NCBI Accession: [NM_005754](#)

Pathways: [SARS-CoV-2 Protein Interactome](#)

Application Details

Application Notes: Optimal working dilution should be determined by the investigator.

Comment: Preparation method: in vitro, wheat germ expression system
Product Quality tested by: 12.5% SDS-PAGE Stained with Coomassie Blue.

Restrictions: For Research Use only

Handling

Buffer: 50 mM Tris-HCl, 10 mM reduced Glutathione, pH =8.0 in the elution buffer.

Handling Advice: Aliquot to avoid repeated freezing and thawing.

Storage: -80 °C

Storage Comment: Best use within three months from the date of receipt of this protein.

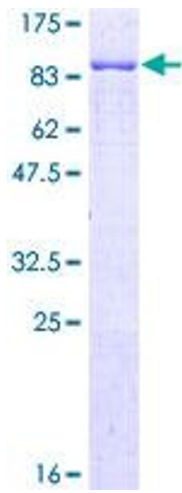


Image 1.