

Datasheet for ABIN1354613

Glucose-6-Phosphate Dehydrogenase Protein (G6PD) (AA 406-515) (GST tag)



[Go to Product page](#)

1 Image

Overview

Quantity:	10 µg
Target:	Glucose-6-Phosphate Dehydrogenase (G6PD)
Protein Characteristics:	AA 406-515
Origin:	Human
Source:	Wheat germ
Protein Type:	Recombinant
Purification tag / Conjugate:	This Glucose-6-Phosphate Dehydrogenase protein is labelled with GST tag.
Application:	Western Blotting (WB), ELISA, Affinity Purification (AP), Antibody Array (AA)

Product Details

Purpose:	G6PD (Human) Recombinant Protein (Q01)
Sequence:	TKKPGMFFNP EESELDLYG NRYKNVKLPD AYERLILDVF CGSQMHFVRS DELREAWRIF TPLLHQIELE KPKPIPIYIG SRGPTEADEL MKRVGFQYEG TYKWWNPHKL
Characteristics:	Human G6PD partial ORF (AAH00337, 406 a.a. - 515 a.a.) recombinant protein with GST-tag at N-terminal.
Purification:	in vitro wheat germ expression system

Target Details

Target:	Glucose-6-Phosphate Dehydrogenase (G6PD)
Alternative Name:	G6PD (G6PD Products)

Target Details

Background:	Full Gene Name: glucose-6-phosphate dehydrogenase Synonyms: G6PD1
Gene ID:	2539
Pathways:	Regulation of Systemic Arterial Blood Pressure by Hormones

Application Details

Application Notes:	Optimal working dilution should be determined by the investigator.
Comment:	Preparation method: in vitro, wheat germ expression system Product Quality tested by: 12.5% SDS-PAGE Stained with Coomassie Blue.
Restrictions:	For Research Use only

Handling

Buffer:	50 mM Tris-HCl, 10 mM reduced Glutathione, pH =8.0 in the elution buffer.
Handling Advice:	Aliquot to avoid repeated freezing and thawing.
Storage:	-80 °C
Storage Comment:	Best use within three months from the date of receipt of this protein.

Images

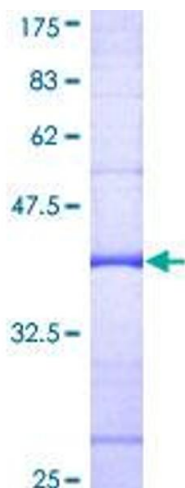


Image 1.