

Datasheet for ABIN1354631

GABBR1 Protein (AA 52-151) (GST tag)



[Go to Product page](#)

1 Image

Overview

Quantity:	10 µg
Target:	GABBR1
Protein Characteristics:	AA 52-151
Origin:	Human
Source:	Wheat germ
Protein Type:	Recombinant
Purification tag / Conjugate:	This GABBR1 protein is labelled with GST tag.
Application:	Western Blotting (WB), ELISA, Affinity Purification (AP), Antibody Array (AA)

Product Details

Purpose:	GABBR1 (Human) Recombinant Protein (Q01)
Sequence:	AVYIGALFPM SGGWPGGQAC QPAVEMALED VNSRRDILPD YELKLIHHDS KCDPGQATKY LYELLYNDPI KIILMPGCSS VSTLVAEAAR MWNLIVLSYG
Characteristics:	Human GABBR1 partial ORF (AAH50532, 52 a.a. - 151 a.a.) recombinant protein with GST-tag at N-terminal.
Purification:	in vitro wheat germ expression system

Target Details

Target:	GABBR1
Alternative Name:	GABBR1 (GABBR1 Products)

Target Details

Background: Full Gene Name: gamma-aminobutyric acid (GABA) B receptor, 1
Synonyms: FLJ92613,GABAB(1e),GABABR1,GABBR1-3,GPRC3A,dJ271M21.1.1,dJ271M21.1.2,hGB1a

Gene ID: 2550

Pathways: [Positive Regulation of Peptide Hormone Secretion, cAMP Metabolic Process](#)

Application Details

Application Notes: Optimal working dilution should be determined by the investigator.

Comment: Preparation method: in vitro, wheat germ expression system
Product Quality tested by: 12.5% SDS-PAGE Stained with Coomassie Blue.

Restrictions: For Research Use only

Handling

Buffer: 50 mM Tris-HCl, 10 mM reduced Glutathione, pH =8.0 in the elution buffer.

Handling Advice: Aliquot to avoid repeated freezing and thawing.

Storage: -80 °C

Storage Comment: Best use within three months from the date of receipt of this protein.

Images

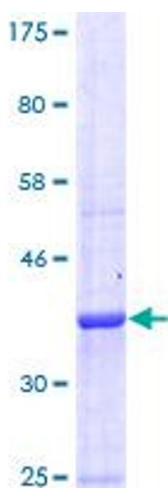


Image 1.