



[Go to Product page](#)

Datasheet for ABIN1354767

GALP Protein (AA 1-116) (GST tag)

1 Image

Overview

Quantity:	10 µg
Target:	GALP
Protein Characteristics:	AA 1-116
Origin:	Human
Source:	Wheat germ
Protein Type:	Recombinant
Purification tag / Conjugate:	This GALP protein is labelled with GST tag.
Application:	Western Blotting (WB), ELISA, Antibody Array (AA), Affinity Purification (AP)

Product Details

Purpose:	GALP (Human) Recombinant Protein (P01)
Sequence:	MAPPSVPLVL LLVLLLSLAE TPASAPAHRG RGGWTLNSAG YLLGPVLHLP QMGDQDGKRE TALEILDWK AIDGLPYSHQ PQPSKRVME TFAKPEIGDL GMLSMKIPKE EDVLKS
Characteristics:	Human GALP full-length ORF (AAI48723.1, 1 a.a. - 116 a.a.) recombinant protein with GST-tag at N-terminal.
Purification:	in vitro wheat germ expression system

Target Details

Target:	GALP
Alternative Name:	GALP (GALP Products)

Target Details

Background: Full Gene Name: galanin-like peptide
Synonyms:

Gene ID: 85569

Application Details

Application Notes: Optimal working dilution should be determined by the investigator.

Comment: Preparation method: in vitro, wheat germ expression system
Product Quality tested by: 12.5% SDS-PAGE Stained with Coomassie Blue.

Restrictions: For Research Use only

Handling

Buffer: 50 mM Tris-HCl, 10 mM reduced Glutathione, pH =8.0 in the elution buffer.

Handling Advice: Aliquot to avoid repeated freezing and thawing.

Storage: -80 °C

Storage Comment: Best use within three months from the date of receipt of this protein.

Images

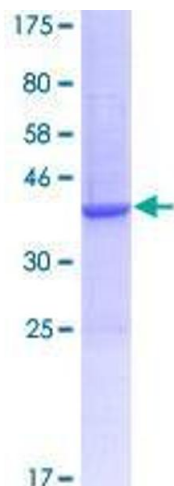


Image 1.