



[Go to Product page](#)

Datasheet for ABIN1354779

## GANAB Protein (AA 865-957) (GST tag)

### 1 Image

#### Overview

Quantity:	10 µg
Target:	GANAB
Protein Characteristics:	AA 865-957
Origin:	Human
Source:	Wheat germ
Protein Type:	Recombinant
Purification tag / Conjugate:	This GANAB protein is labelled with GST tag.
Application:	Western Blotting (WB), ELISA, Antibody Array (AA), Affinity Purification (AP)

#### Product Details

Purpose:	GANAB (Human) Recombinant Protein (Q01)
Sequence:	LDDGHTFNYQ TRQEFLLRRF SFSGNTLVSS SADPEGHFET PIWIERVVII GAGKPAAVVL QTKGSPESRL SFQHDPETSV LVLKPGINV ASD
Characteristics:	Human GANAB partial ORF ( NP_938149, 865 a.a. - 957 a.a.) recombinant protein with GST-tag at N-terminal.
Purification:	in vitro wheat germ expression system

#### Target Details

Target:	GANAB
Alternative Name:	GANAB ( <a href="#">GANAB Products</a> )

## Target Details

Background:	Full Gene Name: glucosidase, alpha, neutral AB Synonyms: G2AN,GlulI,KIAA0088
Gene ID:	23193
NCBI Accession:	<a href="#">NM_198335</a>

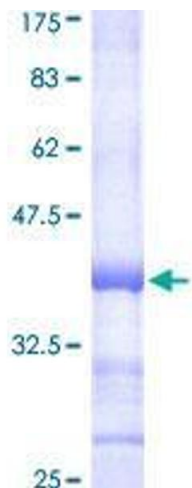
## Application Details

Application Notes:	Optimal working dilution should be determined by the investigator.
Comment:	Preparation method: in vitro, wheat germ expression system Product Quality tested by: 12.5% SDS-PAGE Stained with Coomassie Blue.
Restrictions:	For Research Use only

## Handling

Buffer:	50 mM Tris-HCl, 10 mM reduced Glutathione, pH =8.0 in the elution buffer.
Handling Advice:	Aliquot to avoid repeated freezing and thawing.
Storage:	-80 °C
Storage Comment:	Best use within three months from the date of receipt of this protein.

## Images



**Image 1.**