



[Go to Product page](#)

Datasheet for ABIN135480

anti-Monocyte/Granulocyte antibody

2 Images

Overview

Quantity:	0.5 mg
Target:	Monocyte/Granulocyte
Reactivity:	Pig
Host:	Mouse
Clonality:	Monoclonal
Conjugate:	This Monocyte/Granulocyte antibody is un-conjugated
Application:	Flow Cytometry (FACS)

Product Details

Immunogen:	Fresh dd miniature swine thymocytes
Clone:	74-22-15
Isotype:	IgG1
Specificity:	Porcine monocytes & granulocytes, Mr 230 kDa - macrophages
Characteristics:	Mouse Anti-Porcine Monocyte/Granulocyte-UNLB
Purification:	Purified

Target Details

Target:	Monocyte/Granulocyte
Abstract:	Monocyte/Granulocyte Products

Application Details

- Application Notes:
- **Applications:** FC - Quality tested , IHC-FS - Reported in literature , IHC-PS - Reported in literature , ICC - Reported in literature , IP - Reported in literature , ELISA - Reported in literature , Sep - Reported in literature
 - **Working Dilutions:** Flow Cytometry FITC, BIOT and AF488 conjugates 1 g/106 cells PE conjugate 0.2 g/106 cells For flow cytometry, the suggested use of these reagents is in a final volume of 100 L

Sample Volume: 1 mL

Restrictions: For Research Use only

Handling

Concentration: 0.5 mg/mL

Buffer: 0.5 mg of purified immunoglobulin in 1.0 mL of borate buffered saline, pH 8.2. No preservatives or amine-containing buffer salts added

Preservative: Without preservative

Handling Advice: Each reagent is stable for the period shown on the bottle label if stored as directed.

Storage: 4 °C

Storage Comment: Store at 2-8°C

Images

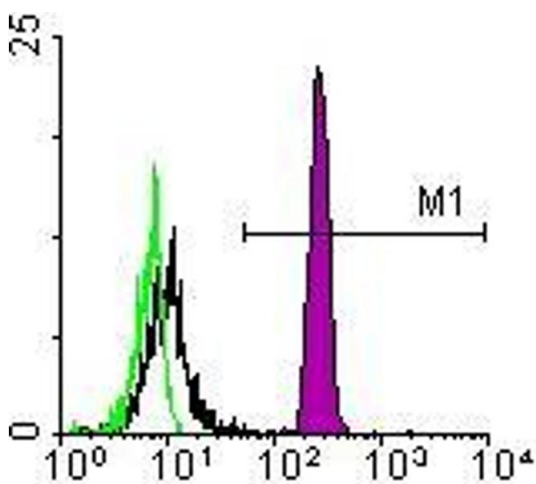
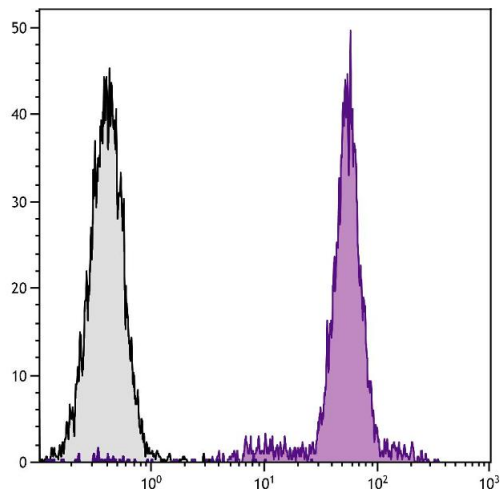


Image 1.



Flow Cytometry

Image 2. Porcine peripheral blood granulocytes were stained with Mouse Anti-Porcine Monocyte/Granulocyte-PE.