



[Go to Product page](#)

Datasheet for ABIN1354801  
**GART Protein (AA 1-433) (GST tag)**

1 Image

Overview

Quantity:	10 µg
Target:	GART
Protein Characteristics:	AA 1-433
Origin:	Human
Source:	Wheat germ
Protein Type:	Recombinant
Purification tag / Conjugate:	This GART protein is labelled with GST tag.
Application:	ELISA, Western Blotting (WB), Antibody Array (AA), Affinity Purification (AP)

Product Details

Purpose:	GART (Human) Recombinant Protein (P01)
Sequence:	MAARVLIIGS GGREHTLAWK LAQSHHVKQV LVAPGNAGTA CSEKISNTAI SISDHTALAQ FCKEKKIEFV VVGPEAPLAA GIVGNLRSAG VQCFGPTAEA AQLESSKRFA KEFMDRHGIP TAQWKAFTKP EEACSFILSA DFPALVVKAS GLAAGKGVIV AKSKEEACKA VQEIMQEKAF GAAGETIVIE ELLDGEEVSC LCFTDGKTVA PMPPAQDHKR LLEGDGGPNT GGMGAYCPAP QVSNLLLLKI KDTVLRQRTVD GMQQEGTPYT GILYAGIMLT KNGPKVLEFN CRFGDPECQV ILPLLKSDLY EVIQSTLDGL LCTSLPVWLE NHTALTVMMA SKGYPGDYTK GVEITGFPEA QALGLEVFHA GTALKNGKVV THGGRVLAVT AIRENLISAL EEAKKGLAAI KFEGAIYRKD VGFRAIAFLQ QPR
Characteristics:	Human GART full-length ORF ( AAH38958.1, 1 a.a. - 433 a.a.) recombinant protein with GST-tag at N-terminal.

## Product Details

---

Purification: in vitro wheat germ expression system

## Target Details

---

Target: GART

Alternative Name: GART ([GART Products](#))

Background: Full Gene Name: phosphoribosylglycinamide formyltransferase, phosphoribosylglycinamide synthetase, phosphoribosylaminoimidazole synthetase  
Synonyms: AIRS,GARS,GARTF,MGC47764,PAIS,PGFT,PRGS

Gene ID: 2618

## Application Details

---

Application Notes: Optimal working dilution should be determined by the investigator.

Comment: Preparation method: in vitro, wheat germ expression system  
Product Quality tested by: 12.5% SDS-PAGE Stained with Coomassie Blue.

Restrictions: For Research Use only

## Handling

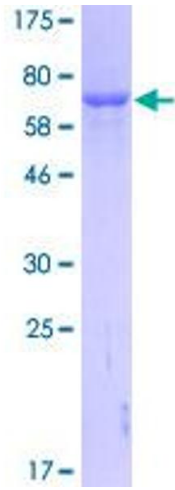
---

Buffer: 50 mM Tris-HCl, 10 mM reduced Glutathione, pH =8.0 in the elution buffer.

Handling Advice: Aliquot to avoid repeated freezing and thawing.

Storage: -80 °C

Storage Comment: Best use within three months from the date of receipt of this protein.



**Image 1.**