

Datasheet for ABIN1354811  
**GAS2L3 Protein (AA 1-694) (GST tag)**



[Go to Product page](#)

1 Image

Overview

Quantity:	10 µg
Target:	GAS2L3
Protein Characteristics:	AA 1-694
Origin:	Human
Source:	Wheat germ
Protein Type:	Recombinant
Purification tag / Conjugate:	This GAS2L3 protein is labelled with GST tag.
Application:	ELISA, Western Blotting (WB), Antibody Array (AA), Affinity Purification (AP)

Product Details

Purpose:	GAS2L3 (Human) Recombinant Protein (P01)
Sequence:	<p>MQPAIQVWFG EDLPLSPRSP LTPRHGPGLA NVCQYDEWIA VRHEATLLPM QEDLSIWLSG LLGIKVKAEK LLEELDNGVL LCQLIDVLQN MVKTCNSEES GNFPMRKVPC KKDAASGSFF ARDNTANFLH WCRDIGVDET YLFESEGLVL HKDPRQVYLC LLEIGRIVSR YGVEPPVLVK LEKEIELEET LLNTSGPEDS ISIPKSCCRH EELHEAVKHI AEDPPCSCSH RFSIEYLSEG RYRLGDKILF IRMLHGKHVM VRVGGGWDTL QGFLLKYDPC RILQFATLEQ KILAFQKGVS NESVPDSPAR TPQPPEMNPL SAVNMFQKQN SKPSVPVSIP KSKEKQGRPP GALVPASSLK GGNLGMSVR SKLPNSPAAS SHPKLKSSKG ITKKPQAPSN NASSSLASLN PVGKNTSSPA LPRTAPCISE SPRKCISSPN TPKAKVIPAQ NSADLPESTL LPNKCSGKTQ PKYLKHNHIS SRDNAVSHLA AHSNSSSKCP KLPKANIPVR PKPSFQSSAK MTKTSSKTIA TGLGTQSQPS DGAPQAKPVP AQKLKSALNL NQPVSVSSVS PVKATQKSKD KNIVSATKKQ PQNKSAFQKT GPSSLKSPGR TPLSIVSLPQ SSTKTQTAPK SAQTVAKSQH STKGPPRS GK TPASIRKPPS</p>

## Product Details

---

SVKDADSGDK KPTAKKKEDD DHYFVMTGSK KPRK

Characteristics:	Human GAS2L3 full-length ORF ( NP_777602.1, 1 a.a. - 694 a.a.) recombinant protein with GST-tag at N-terminal.
Purification:	in vitro wheat germ expression system

## Target Details

---

Target:	GAS2L3
Alternative Name:	GAS2L3 ( <a href="#">GAS2L3 Products</a> )
Background:	Full Gene Name: growth arrest-specific 2 like 3 Synonyms:
Gene ID:	283431
NCBI Accession:	<a href="#">NM_174942</a>

## Application Details

---

Application Notes:	Optimal working dilution should be determined by the investigator.
Comment:	Preparation method: in vitro, wheat germ expression system Product Quality tested by: 12.5% SDS-PAGE Stained with Coomassie Blue.
Restrictions:	For Research Use only

## Handling

---

Buffer:	50 mM Tris-HCl, 10 mM reduced Glutathione, pH =8.0 in the elution buffer.
Handling Advice:	Aliquot to avoid repeated freezing and thawing.
Storage:	-80 °C
Storage Comment:	Best use within three months from the date of receipt of this protein.

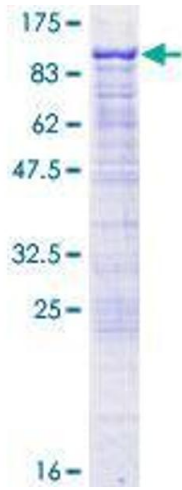


Image 1.