

Datasheet for ABIN135483

## anti-Monocyte/Granulocyte antibody (PE)

2 Images

4 Publications



[Go to Product page](#)

### Overview

Quantity:	0.1 mg
Target:	Monocyte/Granulocyte
Reactivity:	Pig
Host:	Mouse
Clonality:	Monoclonal
Conjugate:	This Monocyte/Granulocyte antibody is conjugated to PE
Application:	Flow Cytometry (FACS)

### Product Details

Immunogen:	Fresh dd miniature swine thymocytes
Clone:	74-22-15
Isotype:	IgG1
Specificity:	Porcine monocytes & granulocytes, Mr 230 kDa - macrophages
Characteristics:	Mouse Anti-Porcine Monocyte/Granulocyte-PE
Purification:	Rabbit Anti-Cofilin (Phospho-Ser3) Polyclonal Antibody is affinity-purified from rabbit antiserum by affinity chromatography using epitope-specific phosphopeptide. The antibody against non-phosphopeptide is removed by chromatography using non-phosphopeptide corresponding to the phosphorylation site.

### Target Details

Target:	Monocyte/Granulocyte
---------	----------------------

## Target Details

---

Abstract: [Monocyte/Granulocyte Products](#)

## Application Details

---

Application Notes:

- **Applications:** FC - Quality tested , IHC-FS - Reported in literature , IHC-PS - Reported in literature , ICC - Reported in literature , IP - Reported in literature , ELISA - Reported in literature , Sep - Reported in literature
- **Working Dilutions:** Flow Cytometry FITC, BIOT and AF488 conjugates 1 g/106 cells PE conjugate 0.2 g/106 cells For flow cytometry, the suggested use of these reagents is in a final volume of 100 L

---

Sample Volume: 1 mL

---

Restrictions: For Research Use only

## Handling

---

Concentration: 0.1 mg/mL

---

Buffer: 0.1 mg in 1.0 mL of PBS/Sodium azide and a stabilizing agent

---

Preservative: Sodium azide

---

Precaution of Use: This product contains Sodium azide: a POISONOUS AND HAZARDOUS SUBSTANCE which should be handled by trained staff only.

---

Handling Advice: **Do not freeze!**  
**Protect conjugated products from light.**  
Each reagent is stable for the period shown on the bottle label if stored as directed.

---

Storage: 4 °C

---

Storage Comment: Store at 2-8°C

## Publications

---

Product cited in: Roos Ljungberg, Börjesson, Martinsson, Wetterö, Kastbom, Svärd: "Presence of salivary IgA anti-citrullinated protein antibodies associate with higher disease activity in patients with rheumatoid arthritis." in: **Arthritis research & therapy**, Vol. 22, Issue 1, pp. 274, (2021) ([PubMed](#) ).

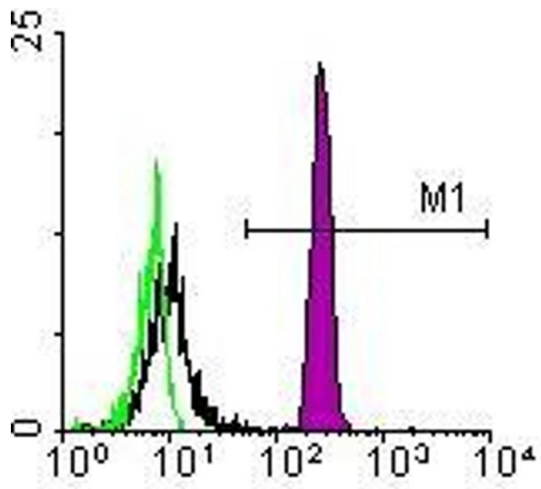
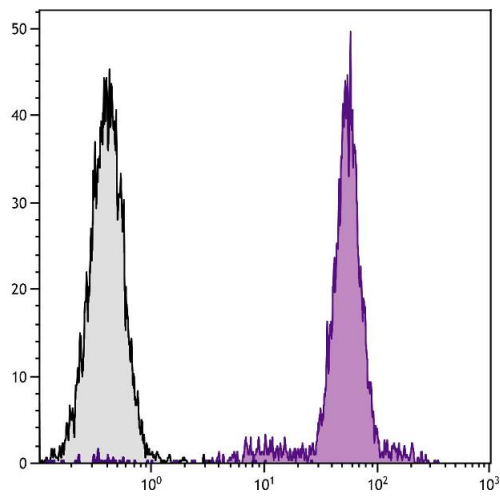


Image 1.



### Flow Cytometry

**Image 2.** Porcine peripheral blood granulocytes were stained with Mouse Anti-Porcine Monocyte/Granulocyte-PE.