



[Go to Product page](#)

Datasheet for ABIN1354845

## GATA6 Protein (AA 496-595) (GST tag)

### 1 Image

#### Overview

Quantity:	10 µg
Target:	GATA6
Protein Characteristics:	AA 496-595
Origin:	Human
Source:	Wheat germ
Protein Type:	Recombinant
Purification tag / Conjugate:	This GATA6 protein is labelled with GST tag.
Application:	ELISA, Western Blotting (WB), Antibody Array (AA), Affinity Purification (AP)

#### Product Details

Purpose:	GATA6 (Human) Recombinant Protein (Q01)
Sequence:	KNINKSKTCS GNSNNSIPMT PTSTSSNSDD CSKNTSPTTQ PTASGAGAPV MTGAGESTNP ENSELKYSQQ DGLYIGVSLA SPAEVTSSVR PDSWCALALA
Characteristics:	Human GATA6 partial ORF ( NP_005248, 496 a.a. - 595 a.a.) recombinant protein with GST-tag at N-terminal.
Purification:	in vitro wheat germ expression system

#### Target Details

Target:	GATA6
Alternative Name:	GATA6 ( <a href="#">GATA6 Products</a> )

## Target Details

Background: Full Gene Name: GATA binding protein 6  
Synonyms:

Gene ID: 2627

NCBI Accession: [NM\\_005257](#)

## Application Details

Application Notes: Optimal working dilution should be determined by the investigator.

Comment: Preparation method: in vitro, wheat germ expression system  
Product Quality tested by: 12.5% SDS-PAGE Stained with Coomassie Blue.

Restrictions: For Research Use only

## Handling

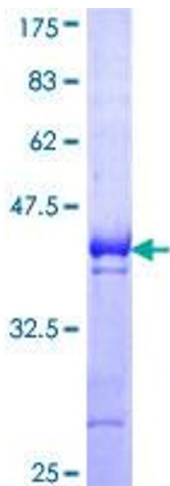
Buffer: 50 mM Tris-HCl, 10 mM reduced Glutathione, pH =8.0 in the elution buffer.

Handling Advice: Aliquot to avoid repeated freezing and thawing.

Storage: -80 °C

Storage Comment: Best use within three months from the date of receipt of this protein.

## Images



**Image 1.**