



[Go to Product page](#)

Datasheet for ABIN1354855  
**GATC Protein (AA 1-136) (GST tag)**

1 Image

Overview

Quantity:	10 µg
Target:	GATC
Protein Characteristics:	AA 1-136
Origin:	Human
Source:	Wheat germ
Protein Type:	Recombinant
Purification tag / Conjugate:	This GATC protein is labelled with GST tag.
Application:	ELISA, Western Blotting (WB), Antibody Array (AA), Affinity Purification (AP)

Product Details

Purpose:	GATC (Human) Recombinant Protein (P01)
Sequence:	MWSRLVWLGL RAPLGGRQGF TSKADPQGSG RITAAVIEHL ERLALVDFGS REAVARLEKA IAFADRLRAV DTDGVEPMES VLEDRCLYLR SDNVVEGNCA DELLQNSHRV VEEYFVAPPG NISLPKLDEQ EPFPHS
Characteristics:	Human GATC full-length ORF ( NP_789788.1, 1 a.a. - 136 a.a.) recombinant protein with GST-tag at N-terminal.
Purification:	in vitro wheat germ expression system

Target Details

Target:	GATC
Alternative Name:	GATC ( <a href="#">GATC Products</a> )

## Target Details

Background:	Full Gene Name: glutamyl-tRNA(Gln) amidotransferase, subunit C homolog (bacterial) Synonyms: 15E1.2,FLJ37000,MGC129938
Gene ID:	283459
NCBI Accession:	<a href="#">NM_176818</a>

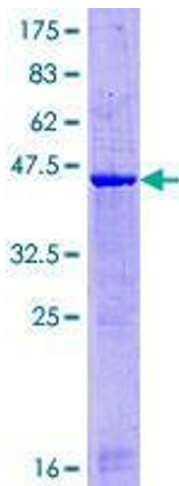
## Application Details

Application Notes:	Optimal working dilution should be determined by the investigator.
Comment:	Preparation method: in vitro, wheat germ expression system Product Quality tested by: 12.5% SDS-PAGE Stained with Coomassie Blue.
Restrictions:	For Research Use only

## Handling

Buffer:	50 mM Tris-HCl, 10 mM reduced Glutathione, pH =8.0 in the elution buffer.
Handling Advice:	Aliquot to avoid repeated freezing and thawing.
Storage:	-80 °C
Storage Comment:	Best use within three months from the date of receipt of this protein.

## Images



**Image 1.**