

Datasheet for ABIN1354857
GATM Protein (AA 1-423) (GST tag)



[Go to Product page](#)

1 Image

Overview

Quantity:	10 µg
Target:	GATM
Protein Characteristics:	AA 1-423
Origin:	Human
Source:	Wheat germ
Protein Type:	Recombinant
Purification tag / Conjugate:	This GATM protein is labelled with GST tag.
Application:	ELISA, Western Blotting (WB), Antibody Array (AA), Affinity Purification (AP)

Product Details

Purpose:	GATM (Human) Recombinant Protein (P01)
Sequence:	MLRVRCLRGG SRGAEAVHYI GSRLGRTLGT WVQRTFQSTQ AATASSRNSC AADDKATEPL PKDCPVSSYN EWDPLEEVIV GRAENACVPP FTIEVKANTY EKYWPFYQKQ GGHYFPKDHL KKAVAEIEEM CNILKTEGVT VRRPDPIDWS LKYKTPDFES TGLYSAMPRD ILIVVGNEII EAPMAWRSRF FEYRAYRSII KDYFHRGAKW TTAPKPTMAD ELYNQDYPIH SVEDRHKLAA QGKFVTTEFE PCFDAADFIR AGRDIFAQRS QVTNYLGIEW MRRHLAPDYR VHIISFKDPN PMHIDATFNI IGPGIVLSNP DRPCHQIDLF KKAGWTIITP PTPIIPDDHP LWMSSKWLSM NVLMLDEKRV MVDANEVPIQ KMFEEKLGITT IKVNIRNANS LGGGFHCWTC DVRRRGTLS YLD
Characteristics:	Human GATM full-length ORF (NP_001473.1, 1 a.a. - 423 a.a.) recombinant protein with GST-tag at N-terminal.
Purification:	in vitro wheat germ expression system

Target Details

Target:	GATM
Alternative Name:	GATM (GATM Products)
Background:	Full Gene Name: glycine amidinotransferase (L-arginine:glycine amidinotransferase) Synonyms: AGAT,AT
Gene ID:	2628
NCBI Accession:	NM_001482

Application Details

Application Notes:	Optimal working dilution should be determined by the investigator.
Comment:	Preparation method: in vitro, wheat germ expression system Product Quality tested by: 12.5% SDS-PAGE Stained with Coomassie Blue.
Restrictions:	For Research Use only

Handling

Buffer:	50 mM Tris-HCl, 10 mM reduced Glutathione, pH =8.0 in the elution buffer.
Handling Advice:	Aliquot to avoid repeated freezing and thawing.
Storage:	-80 °C
Storage Comment:	Best use within three months from the date of receipt of this protein.

Images

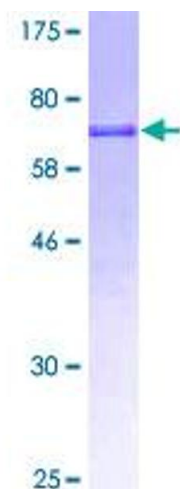


Image 1.