



[Go to Product page](#)

Datasheet for ABIN1354859

GATM Protein (AA 1-100) (GST tag)

1 Image

Overview

Quantity:	10 µg
Target:	GATM
Protein Characteristics:	AA 1-100
Origin:	Human
Source:	Wheat germ
Protein Type:	Recombinant
Purification tag / Conjugate:	This GATM protein is labelled with GST tag.
Application:	ELISA, Western Blotting (WB), Antibody Array (AA), Affinity Purification (AP)

Product Details

Purpose:	GATM (Human) Recombinant Protein (Q01)
Sequence:	MLRVRCLRGG SRGAEAVHYI GSRLGRTL TG WVQRTFQSTQ AATASSRNSC AADDKATEPL PKDCPVSSYN EWDPLEEVIV GRAENACVPP FTIEVKANTY
Characteristics:	Human GATM partial ORF (NP_001473.1, 1 a.a. - 100 a.a.) recombinant protein with GST-tag at N-terminal.
Purification:	in vitro wheat germ expression system

Target Details

Target:	GATM
Alternative Name:	GATM (GATM Products)

Target Details

Background:	Full Gene Name: glycine amidinotransferase (L-arginine:glycine amidinotransferase) Synonyms: AGAT,AT
Gene ID:	2628
NCBI Accession:	NM_001482

Application Details

Application Notes:	Optimal working dilution should be determined by the investigator.
Comment:	Preparation method: in vitro, wheat germ expression system Product Quality tested by: 12.5% SDS-PAGE Stained with Coomassie Blue.
Restrictions:	For Research Use only

Handling

Buffer:	50 mM Tris-HCl, 10 mM reduced Glutathione, pH =8.0 in the elution buffer.
Handling Advice:	Aliquot to avoid repeated freezing and thawing.
Storage:	-80 °C
Storage Comment:	Best use within three months from the date of receipt of this protein.

Images

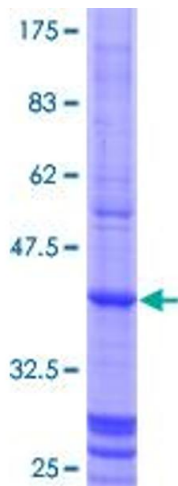


Image 1.