

Datasheet for ABIN1354875
GBF1 Protein (AA 101-209) (GST tag)



[Go to Product page](#)

1 Image

Overview

| | |
|-------------------------------|---|
| Quantity: | 10 µg |
| Target: | GBF1 |
| Protein Characteristics: | AA 101-209 |
| Origin: | Human |
| Source: | Wheat germ |
| Protein Type: | Recombinant |
| Purification tag / Conjugate: | This GBF1 protein is labelled with GST tag. |
| Application: | Antibody Array (AA), Affinity Purification (AP), ELISA, Western Blotting (WB) |

Product Details

| | |
|------------------|---|
| Purpose: | GBF1 (Human) Recombinant Protein (Q01) |
| Sequence: | THEGTAEGME NMADAVTHAR FVGTDPASDE VVLMKILQVL RTLLLTPVGA HLTNESVCEI MQSCFRICFE MRLSELLRKS AEHTLVDMVQ LLFTRL PQFK EEPKNYVGT |
| Characteristics: | Human GBF1 partial ORF (NP_004184.1, 101 a.a. - 209 a.a.) recombinant protein with GST-tag at N-terminal. |
| Purification: | in vitro wheat germ expression system |

Target Details

| | |
|-------------------|--|
| Target: | GBF1 |
| Alternative Name: | GBF1 (GBF1 Products) |

Target Details

| | |
|-----------------|---|
| Background: | Full Gene Name: golgi-specific brefeldin A resistant guanine nucleotide exchange factor 1 Synonyms: ARF1GEF,FLJ21263,FLJ21500,KIAA0248,MGC134877,MGC134878 |
| Gene ID: | 8729 |
| NCBI Accession: | NM_004193 |

Application Details

| | |
|--------------------|--|
| Application Notes: | Optimal working dilution should be determined by the investigator. |
| Comment: | Preparation method: in vitro, wheat germ expression system Product Quality tested by: 12.5% SDS-PAGE Stained with Coomassie Blue. |
| Restrictions: | For Research Use only |

Handling

| | |
|------------------|---|
| Buffer: | 50 mM Tris-HCl, 10 mM reduced Glutathione, pH =8.0 in the elution buffer. |
| Handling Advice: | Aliquot to avoid repeated freezing and thawing. |
| Storage: | -80 °C |
| Storage Comment: | Best use within three months from the date of receipt of this protein. |

Images

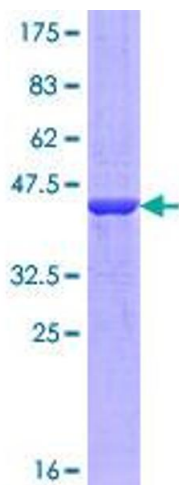


Image 1.