

Datasheet for ABIN1354877

**GBGT1 Protein (AA 1-347) (GST tag)**[Go to Product page](#)**1** Image

## Overview

Quantity:	10 µg
Target:	GBGT1
Protein Characteristics:	AA 1-347
Origin:	Human
Source:	Wheat germ
Protein Type:	Recombinant
Purification tag / Conjugate:	This GBGT1 protein is labelled with GST tag.
Application:	ELISA, Western Blotting (WB), Antibody Array (AA), Affinity Purification (AP)

## Product Details

Purpose:	GBGT1 (Human) Recombinant Protein (P01)
Sequence:	MHRRRLALGL GFCLLAGTSF SVLWVYLENW LPVSYVPYYL PCPEIFNMKL HYKREKPLQP VWWSQYPQPK LLEHRPTQLL TLTPWLAPIV SEGTFNPELL QHIYQPLNLT IGVTVFAVGK YTHFIQSFLE SAEFFMRGY RVHYYIFTDN PAAVPGVPLG PHRLSSIPI QGHSHWEETS MRRMETISQH IAKRAHREVD YLFCLDVMV FRNPWGPETL GDLVAAIHPS YYAVPRQQFP YERRRVSTAF VADSEGDFYY GGAVFGGQVA RVYEFTRGCH MAILADKANG IMAAWREESH LNRHFISNKP SKVLSPEYLW DDRKPQPPSL KLIRFSTLDK DISCLRS
Characteristics:	Human GBGT1 full-length ORF ( AAH32499.1, 1 a.a. - 347 a.a.) recombinant protein with GST-tag at N-terminal.
Purification:	in vitro wheat germ expression system

## Target Details

Target:	GBGT1
Alternative Name:	GBGT1 ( <a href="#">GBGT1 Products</a> )
Background:	Full Gene Name: globoside alpha-1,3-N-acetylgalactosaminyltransferase 1 Synonyms: A3GALNT,FS,MGC44848,UNQ2513
Gene ID:	26301

## Application Details

Application Notes:	Optimal working dilution should be determined by the investigator.
Comment:	Preparation method: in vitro, wheat germ expression system Product Quality tested by: 12.5% SDS-PAGE Stained with Coomassie Blue.
Restrictions:	For Research Use only

## Handling

Buffer:	50 mM Tris-HCl, 10 mM reduced Glutathione, pH =8.0 in the elution buffer.
Handling Advice:	Aliquot to avoid repeated freezing and thawing.
Storage:	-80 °C
Storage Comment:	Best use within three months from the date of receipt of this protein.

## Images

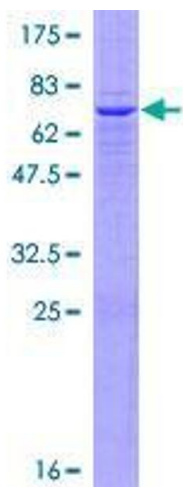


Image 1.