

Datasheet for ABIN1354888
GBP5 Protein (AA 1-586) (GST tag)



[Go to Product page](#)

1 Image

Overview

Quantity:	10 µg
Target:	GBP5
Protein Characteristics:	AA 1-586
Origin:	Human
Source:	Wheat germ
Protein Type:	Recombinant
Purification tag / Conjugate:	This GBP5 protein is labelled with GST tag.
Application:	Western Blotting (WB), ELISA, Antibody Array (AA), Affinity Purification (AP)

Product Details

Purpose:	GBP5 (Human) Recombinant Protein (P01)
Sequence:	MALEIHMSDP MCLIENFNEQ LKVNQEALEI LSAITQPVVV VAIVGLYRTG KSYLMNKLAV KNKGFSVAST VQSHTKGIWI WCVPHNWPV HTLVLLDTEG LGDVEKADNK NDIQIFALAL LLSSTFVYNT VNKIDQGAID LLHNVTELD LLKARNSPDL DRVEDPADSA SFFPDLVWTL RDFCLGLEID QQLVTPDEYL ENSLRPKQGS DQRVQNFNLP RLCIQKFFPK KKCIFIDLPA HQKKLAQLET LPDDELEPEF VQQVTEFCSY IFSHSMTKTL PGGIMVNGSR LKNLVLTYYN AISSGDLPCI ENAVLALAQR ENSAAVQKAI AHYDQQMGQK VQLPMETLQE LLDLHRTSER EAIEVFMKNS FKDVDQSFQK ELETLLDAKQ NDICKRNLEA SSDYCSALLK DIFGPLEEAV KQGIYSKPGG HNLFIQKTEE LKAKYYREPR KGIQAEVLQ KYLKSKEVS HAILQTDQAL TETEKKKKEA QVKAEAEKAE AQRLAAIQRQ NEQMMQERER LHQEQVRQME IAKQNWLAEQ QKMREQQMQE QAAQLSTTFQ AQNRSLLESEL QHAQRTVNND DPCVLL
Characteristics:	Human GBP5 full-length ORF (AAH31639, 1 a.a. - 586 a.a.) recombinant protein with GST-tag at

Product Details

N-terminal.

Purification: in vitro wheat germ expression system

Target Details

Target: GBP5

Alternative Name: GBP5 ([GBP5 Products](#))

Background: Full Gene Name: guanylate binding protein 5
Synonyms: GBP-5

Gene ID: 115362

Application Details

Application Notes: Optimal working dilution should be determined by the investigator.

Comment: Preparation method: in vitro, wheat germ expression system
Product Quality tested by: 12.5% SDS-PAGE Stained with Coomassie Blue.

Restrictions: For Research Use only

Handling

Buffer: 50 mM Tris-HCl, 10 mM reduced Glutathione, pH =8.0 in the elution buffer.

Handling Advice: Aliquot to avoid repeated freezing and thawing.

Storage: -80 °C

Storage Comment: Best use within three months from the date of receipt of this protein.

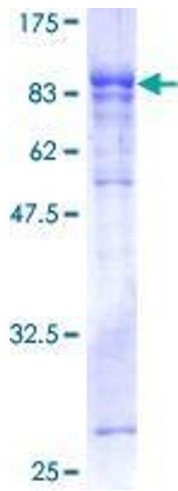


Image 1.