



[Go to Product page](#)

Datasheet for ABIN1354906

GCET2 Protein (AA 79-178) (GST tag)

1 Image

Overview

Quantity:	10 µg
Target:	GCET2
Protein Characteristics:	AA 79-178
Origin:	Human
Source:	Wheat germ
Protein Type:	Recombinant
Purification tag / Conjugate:	This GCET2 protein is labelled with GST tag.
Application:	Western Blotting (WB), ELISA, Antibody Array (AA), Affinity Purification (AP)

Product Details

Purpose:	GCET2 (Human) Recombinant Protein (Q01)
Sequence:	TYSEELCYTL INHRVLCTRP SGNSAEEYYE NVPCAERPR ESLGGTET EY SLLHMPSTDP RHARSPED EY ELLMPHRISS HFLQQPRPLM APSETQFSHL
Characteristics:	Human GCET2 partial ORF (NP_689998, 79 a.a. - 178 a.a.) recombinant protein with GST-tag at N-terminal.
Purification:	in vitro wheat germ expression system

Target Details

Target:	GCET2
Alternative Name:	GCET2 (GCET2 Products)

Target Details

Background:	Full Gene Name: germinal center expressed transcript 2 Synonyms: GCAT2,HGAL,MGC40441
Gene ID:	257144
NCBI Accession:	NM_152785

Application Details

Application Notes:	Optimal working dilution should be determined by the investigator.
Comment:	Preparation method: in vitro, wheat germ expression system Product Quality tested by: 12.5% SDS-PAGE Stained with Coomassie Blue.
Restrictions:	For Research Use only

Handling

Buffer:	50 mM Tris-HCl, 10 mM reduced Glutathione, pH =8.0 in the elution buffer.
Handling Advice:	Aliquot to avoid repeated freezing and thawing.
Storage:	-80 °C
Storage Comment:	Best use within three months from the date of receipt of this protein.

Images

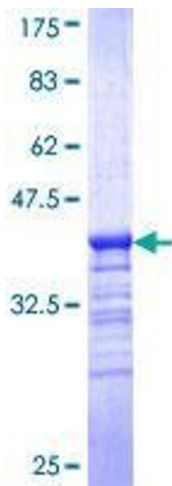


Image 1.