



[Go to Product page](#)

Datasheet for ABIN1354922

## GCLC Protein (AA 1-637) (GST tag)

### 1 Image

#### Overview

Quantity:	10 µg
Target:	GCLC
Protein Characteristics:	AA 1-637
Origin:	Human
Source:	Wheat germ
Protein Type:	Recombinant
Purification tag / Conjugate:	This GCLC protein is labelled with GST tag.
Application:	Western Blotting (WB), ELISA, Antibody Array (AA), Affinity Purification (AP)

#### Product Details

Purpose:	GCLC (Human) Recombinant Protein (P01)
Sequence:	MGLLSQGSPL SWEETKRHAD HVRRHGILQF LHIYHAVKDR HKDVLKWGDE VEYMLVSFDH ENKKVRLVLS GEKVLETLQE KGERTNPNHPTLWRPEYGSY MIEGTPGQPY GGTMSEFNTV EANMRKRRKE ATSILEENQA LCTITSFPRL GCPGFTLPEV KPNPVEGGAS KSLFFPDEAI NKHPRFSTLT RNIRHRRGEK VVINVPFKD KNTSPFIET FTEDDEASRA SKPDHIYMDA MGFGMGNCC LQVTFQAC SIS EARYLYDQLA TICPIVMALS AASPFYRGYV SDIDCRWGV I SASVDDRTRE ERGLEPLKNN NYRISKSRYD SIDSYLSKCG EKYNDIDLTI DKEIYEQLLQ EGIDHLLAQH VAHLFIRDPL TLFEEKIHLD DANESDHFEN IQSTNWQTMRFKPPPPNSDI GWRVEFRPME VQLTDFENSA YVVFVLLTR VILSYKLDLFIPLSKVDENM KVAQKRDAVL QGMFYFRKDI CKGGNAVVDG CGKAQNSTEL AAEEYTLMSI DTIINGKEGV FPGLIPILNS YLENMEVDVD TRCSILNYLK LIKKRASGEL MVARWWMREF IANHPDYKQD SVITDEMNY S LILKCNQIAN ELCEPELLG SAFRKVKYSG SKTDSSN

## Product Details

---

Characteristics:	Human GCLC full-length ORF ( NP_001489.1, 1 a.a. - 637 a.a.) recombinant protein with GST-tag at N-terminal.
Purification:	in vitro wheat germ expression system

## Target Details

---

Target:	GCLC
Alternative Name:	GCLC ( <a href="#">GCLC Products</a> )
Background:	Full Gene Name: glutamate-cysteine ligase, catalytic subunit Synonyms: GCS, GLCL, GLCLC
Gene ID:	2729
NCBI Accession:	<a href="#">NM_001498</a>
Pathways:	<a href="#">Cell RedoxHomeostasis</a>

## Application Details

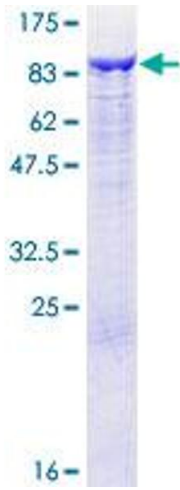
---

Application Notes:	Optimal working dilution should be determined by the investigator.
Comment:	Preparation method: in vitro, wheat germ expression system Product Quality tested by: 12.5% SDS-PAGE Stained with Coomassie Blue.
Restrictions:	For Research Use only

## Handling

---

Buffer:	50 mM Tris-HCl, 10 mM reduced Glutathione, pH =8.0 in the elution buffer.
Handling Advice:	Aliquot to avoid repeated freezing and thawing.
Storage:	-80 °C
Storage Comment:	Best use within three months from the date of receipt of this protein.



**Image 1.**