

Datasheet for ABIN1354948

GDAP1L1 Protein (AA 1-367) (GST tag)



[Go to Product page](#)

1 Image

Overview

Quantity:	10 µg
Target:	GDAP1L1
Protein Characteristics:	AA 1-367
Origin:	Human
Source:	Wheat germ
Protein Type:	Recombinant
Purification tag / Conjugate:	This GDAP1L1 protein is labelled with GST tag.
Application:	ELISA, Western Blotting (WB), Antibody Array (AA), Affinity Purification (AP)

Product Details

Purpose:	GDAP1L1 (Human) Recombinant Protein (P01)
Sequence:	MATPNLPT NCSWWPISAL ESDAAKPAEA PDAPEAASPA HWPRESLVLY HWTQSFSSQK VRLVIAEKGL VCEERDVSLP QSEHKPEWFM RLNLGEEVPV IHRDNIISD YDQIIDYVER TFTGEHVVAL MPEVGSQHA RVLQYRELLD ALPMDAYTHG CILHPELTTD SMIPKYATAE IRRHLANATT DLMKLDHEEE PQLSEPYLSK QKKLMAKILE HDDVSYLKKI LGELAMVLDQ IEAELEKRKL ENEGQKCELW LCGCAFTLAD VLLGATLHRL KFLGLSKKYW EDGSRPNLQS FFERVQRRFA FRKVLGDIHT TLLSAVIPNA FRLVKRKPPS FFGASFLMGS LGGMGYFAYW YLKKKYI
Characteristics:	Human GDAP1L1 full-length ORF (NP_076939.3, 1 a.a. - 367 a.a.) recombinant protein with GST-tag at N-terminal.
Purification:	in vitro wheat germ expression system

Target Details

Target:	GDAP1L1
Alternative Name:	GDAP1L1 (GDAP1L1 Products)
Background:	Full Gene Name: ganglioside-induced differentiation-associated protein 1-like 1 Synonyms: DKFZp761K228,dJ881L22.1,dJ995J12.1.1
Gene ID:	78997
NCBI Accession:	NM_024034

Application Details

Application Notes:	Optimal working dilution should be determined by the investigator.
Comment:	Preparation method: in vitro, wheat germ expression system Product Quality tested by: 12.5% SDS-PAGE Stained with Coomassie Blue.
Restrictions:	For Research Use only

Handling

Buffer:	50 mM Tris-HCl, 10 mM reduced Glutathione, pH =8.0 in the elution buffer.
Handling Advice:	Aliquot to avoid repeated freezing and thawing.
Storage:	-80 °C
Storage Comment:	Best use within three months from the date of receipt of this protein.

Images

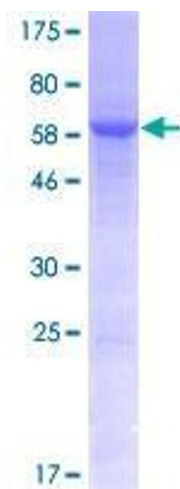


Image 1.