



[Go to Product page](#)

Datasheet for ABIN1354991

## GDPD3 Protein (AA 1-256) (GST tag)

### 1 Image

#### Overview

Quantity:	10 µg
Target:	GDPD3
Protein Characteristics:	AA 1-256
Origin:	Human
Source:	Wheat germ
Protein Type:	Recombinant
Purification tag / Conjugate:	This GDPD3 protein is labelled with GST tag.
Application:	ELISA, Western Blotting (WB), Antibody Array (AA), Affinity Purification (AP)

#### Product Details

Purpose:	GDPD3 (Human) Recombinant Protein (P01)
Sequence:	MAQRSDLLEL DCQLTRDRVV VVSHDENLCR QSGLNRDVGS LDFEDLPLYK EKLEVYFSPG HFAHGSDRRM VRLEDLFQRF PRTPMSEVEIK GKNEELIREI AGLVRRYDRN EITIWASEKS SVMKKCKAAN PEMPLSFTIS RGFVWLLSYY LGLLPFIPIP EKFFFCFLPN IINRTYFPFS CSCLNQLLAV VSKWLIMRKS LIRHLEERGV QVVFVWCLNEE SDFEAAFSVG ATGVITDYPT ALRHYLDNHG PAARTS
Characteristics:	Human GDPD3 full-length ORF ( NP_077283.1, 1 a.a. - 256 a.a.) recombinant protein with GST-tag at N-terminal.
Purification:	in vitro wheat germ expression system

## Target Details

Target:	GDPD3
Alternative Name:	GDPD3 ( <a href="#">GDPD3 Products</a> )
Background:	Full Gene Name: glycerophosphodiester phosphodiesterase domain containing 3 Synonyms: FLJ22603,MGC4171
Gene ID:	79153
NCBI Accession:	<a href="#">NM_024307</a>

## Application Details

Application Notes:	Optimal working dilution should be determined by the investigator.
Comment:	Preparation method: in vitro, wheat germ expression system Product Quality tested by: 12.5% SDS-PAGE Stained with Coomassie Blue.
Restrictions:	For Research Use only

## Handling

Buffer:	50 mM Tris-HCl, 10 mM reduced Glutathione, pH =8.0 in the elution buffer.
Handling Advice:	Aliquot to avoid repeated freezing and thawing.
Storage:	-80 °C
Storage Comment:	Best use within three months from the date of receipt of this protein.

## Images

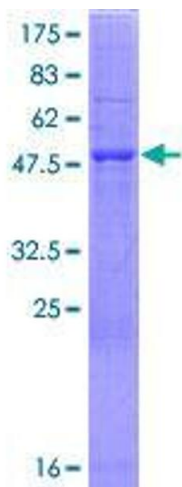


Image 1.