



[Go to Product page](#)

Datasheet for ABIN1355002

## GEMIN7 Protein (AA 1-131) (GST tag)

### 1 Image

#### Overview

Quantity:	10 µg
Target:	GEMIN7
Protein Characteristics:	AA 1-131
Origin:	Human
Source:	Wheat germ
Protein Type:	Recombinant
Purification tag / Conjugate:	This GEMIN7 protein is labelled with GST tag.
Application:	ELISA, Western Blotting (WB), Antibody Array (AA), Affinity Purification (AP)

#### Product Details

Purpose:	GEMIN7 (Human) Recombinant Protein (P01)
Sequence:	MQTPVNIPVP VLRLPRGPDG FSRGFAPDGR RAPLRPEVPE IQECPIAQES LESQEQRARA ALRERYLRSL LAMVGHQVSF TLHEGVRVAA HFGATDLDVA NFYVSQLQTP IGVQAEALLR CSDIISYTFK P
Characteristics:	Human GEMIN7 full-length ORF ( AAH07793, 1 a.a. - 131 a.a.) recombinant protein with GST-tag at N-terminal.
Purification:	in vitro wheat germ expression system

#### Target Details

Target:	GEMIN7
Alternative Name:	GEMIN7 ( <a href="#">GEMIN7 Products</a> )

## Target Details

Background:	Full Gene Name: gem (nuclear organelle) associated protein 7 Synonyms: SIP3
Gene ID:	79760
Pathways:	<a href="#">Ribonucleoprotein Complex Subunit Organization</a>

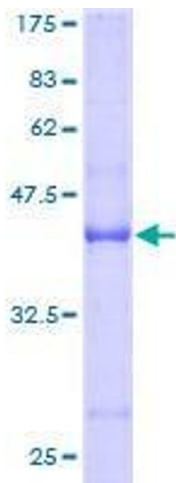
## Application Details

Application Notes:	Optimal working dilution should be determined by the investigator.
Comment:	Preparation method: in vitro, wheat germ expression system Product Quality tested by: 12.5% SDS-PAGE Stained with Coomassie Blue.
Restrictions:	For Research Use only

## Handling

Buffer:	50 mM Tris-HCl, 10 mM reduced Glutathione, pH =8.0 in the elution buffer.
Handling Advice:	Aliquot to avoid repeated freezing and thawing.
Storage:	-80 °C
Storage Comment:	Best use within three months from the date of receipt of this protein.

## Images



**Image 1.**