



[Go to Product page](#)

Datasheet for ABIN1355013

## GFI1 Protein (AA 1-91) (GST tag)

### 1 Image

#### Overview

Quantity:	10 µg
Target:	GFI1
Protein Characteristics:	AA 1-91
Origin:	Human
Source:	Wheat germ
Protein Type:	Recombinant
Purification tag / Conjugate:	This GFI1 protein is labelled with GST tag.
Application:	ELISA, Western Blotting (WB), Antibody Array (AA), Affinity Purification (AP)

#### Product Details

Purpose:	GFI1 (Human) Recombinant Protein (Q01)
Sequence:	MPRSFLVKSK KAHSYHQPRS PGPDYSLRLE NVPAPSRADS TSNAGGAKAE PRDRLSPESQ LTEAPDRASA SPRQLRSSVC ERSSEFEDFW R
Characteristics:	Human GFI1 partial ORF ( NP_005254, 1 a.a. - 91 a.a.) recombinant protein with GST-tag at N-terminal.
Purification:	in vitro wheat germ expression system

#### Target Details

Target:	GFI1
Alternative Name:	GFI1 ( <a href="#">GFI1 Products</a> )

## Target Details

Background:	Full Gene Name: growth factor independent 1 transcription repressor Synonyms: FLJ94509,GFI-1,ZNF163
Gene ID:	2672
NCBI Accession:	<a href="#">NM_005263</a>

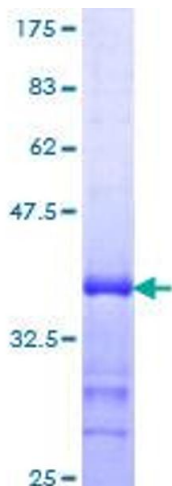
## Application Details

Application Notes:	Optimal working dilution should be determined by the investigator.
Comment:	Preparation method: in vitro, wheat germ expression system Product Quality tested by: 12.5% SDS-PAGE Stained with Coomassie Blue.
Restrictions:	For Research Use only

## Handling

Buffer:	50 mM Tris-HCl, 10 mM reduced Glutathione, pH =8.0 in the elution buffer.
Handling Advice:	Aliquot to avoid repeated freezing and thawing.
Storage:	-80 °C
Storage Comment:	Best use within three months from the date of receipt of this protein.

## Images



**Image 1.**