



[Go to Product page](#)

Datasheet for ABIN1355022

GFM2 Protein (AA 1-779) (GST tag)

1 Image

Overview

Quantity:	25 µg
Target:	GFM2
Protein Characteristics:	AA 1-779
Origin:	Human
Source:	Wheat germ
Protein Type:	Recombinant
Purification tag / Conjugate:	This GFM2 protein is labelled with GST tag.
Application:	Western Blotting (WB), ELISA, Antibody Array (AA), Affinity Purification (AP)

Product Details

Purpose:	GFM2 (Human) Recombinant Protein (P01)
Sequence:	MLTNLRIFAM SHQTIPSVYI NNICCYKIRA SLKRLKPHVP LGRNCSSLPG LIGNDIKSLH SIINPPIAKI RNIGIMAHID AGKTTTTTERI LYYSGYTRSL GDVDDGDTVDFMAQERERG ITIQSAAVTF DWKGYRVNLI DTPGHVDFTL EVERCLRVLD GAVAVFDASA GVEAQLTVW RQADKHNIPR ICFLNKMDKT GASFKYAVES IREKLKAKPL LLQLPIGEAK TFKGVVDVVM KEKLLWNCNS NDGKDFERKP LLEMNDPELL KETTEARNAL IEQVADLDDE FADLVLEEFSENFDLLPAEK LQTAIHRVTL AQTAVPVLCG SALKNKGIQP LLDVAVTMYLP SPEERNYEFQWYKDDLCAL AFKVLHDKQR GPLVFMRIYS GTIKPQLAIH NINGNCTERI SRRLLPFADQ HVEIPSLTAG NIALTVGLKH TATGDTIVSS KSSALAAARR AEREKGGKHR QNNEAERLLL AGVEIPEPVF FCTIEPPSLK QPDLLEHALK CLQREDPSLK VRLDPDSGQT VLCGMGELHI EIIHDRIKRE YGLETYLGPL QVAYRETILN SVRATDTLDR TLGDKRHLVT VEVEARPIET SSVMPVIEFE YAESINEGLL KVSQEIENG IHSACLQGPL LGSPIQDVAI TLHSLTIHPG TSTTMISACV

Product Details

SRCVQKALKK ADKQVLEPLM NLEVTVARDY LSPVLADLAQ RRGNIQEIQT RQDNKVVIGF
VPLAEIMGYS TVLRRTLTS GS ATFALELSTY QAMNPQDQNT LLNRRSGLT

Characteristics: Human GFM2 full-length ORF (NP_115756.2, 1 a.a. - 779 a.a.) recombinant protein with GST-tag at N-terminal.

Purification: in vitro wheat germ expression system

Target Details

Target: GFM2

Alternative Name: GFM2 ([GFM2 Products](#))

Background: Full Gene Name: G elongation factor, mitochondrial 2
Synonyms: EFG2,MST027,hEFG2

Gene ID: 84340

NCBI Accession: [NM_032380](#)

Pathways: [Ribonucleoprotein Complex Subunit Organization](#)

Application Details

Application Notes: Optimal working dilution should be determined by the investigator.

Comment: Preparation method: in vitro, wheat germ expression system
Product Quality tested by: 12.5% SDS-PAGE Stained with Coomassie Blue.

Restrictions: For Research Use only

Handling

Buffer: 50 mM Tris-HCl, 10 mM reduced Glutathione, pH =8.0 in the elution buffer.

Handling Advice: Aliquot to avoid repeated freezing and thawing.

Storage: -80 °C

Storage Comment: Best use within three months from the date of receipt of this protein.

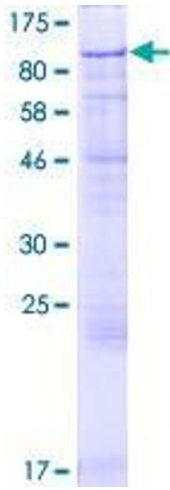


Image 1.