

Datasheet for ABIN135504  
**anti-CD3 antibody**



[Go to Product page](#)

2 Images

1 Publication

## Overview

Quantity:	0.5 mg
Target:	CD3
Reactivity:	Chicken
Host:	Mouse
Clonality:	Monoclonal
Conjugate:	This CD3 antibody is un-conjugated
Application:	Flow Cytometry (FACS)

## Product Details

Immunogen:	Chicken thymocytes and Ig- blood mononuclear cells
Clone:	CT-3
Isotype:	IgG1
Specificity:	Chicken/Pigeon CD3, Mr 20, 19 & 17 kDa
Characteristics:	Mouse Anti-Chicken CD3-UNLB
Purification:	Purified

## Target Details

Target:	CD3
Alternative Name:	CD3 ( <a href="#">CD3 Products</a> )
Background:	CD3 is a member of the T cell receptor-associated CD3 complex.

## Target Details

Pathways: [TCR Signaling, Ubiquitin Proteasome Pathway](#)

## Application Details

Application Notes:

- **Applications:** FC - Quality tested , IHC-FS - Reported in literature , IHC-PS - Reported in literature , IP - Reported in literature , Stim - Reported in literature
- **Working Dilutions:** Flow Cytometry FITC, BIOT, AF488, and PACBLU conjugates 1 g/106 cells PE conjugate 0.3 g/106 cells SPRD conjugate 0.2 g/106 cells AF700, AF647, and APC conjugates 0.1 g/106 cells For flow cytometry, the suggested use of these reagents is in a final volume of 100 L

Comment: In vitro depletion of CD3+ cells, In vivo activation of T cells

Sample Volume: 1 mL

Restrictions: For Research Use only

## Handling

Concentration: 0.5 mg/mL

Buffer: 0.5 mg of purified immunoglobulin in 1.0 mL of borate buffered saline, pH 8.2. No preservatives or amine-containing buffer salts added

Preservative: Without preservative

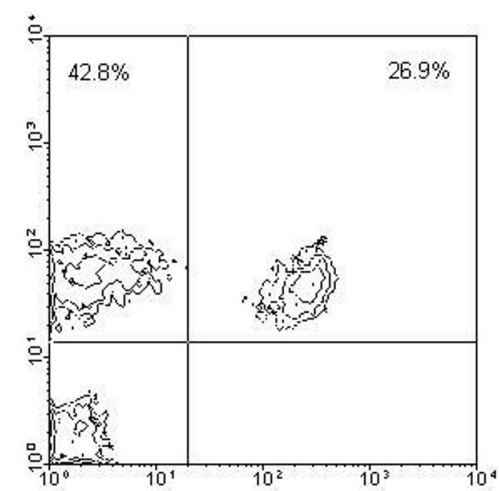
Handling Advice: Each reagent is stable for the period shown on the bottle label if stored as directed.

Storage: 4 °C

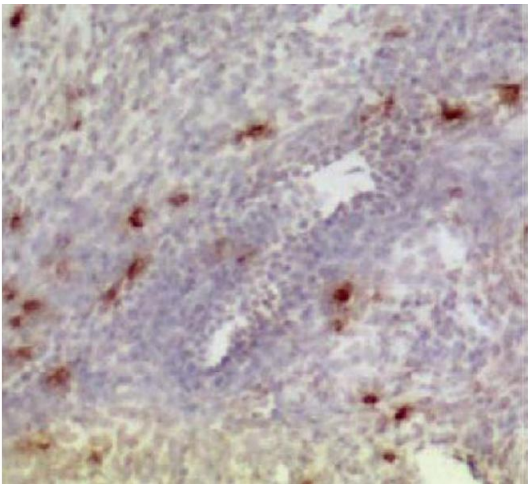
Storage Comment: Store at 2-8°C

## Publications

Product cited in: Zhang, Sun, Wang, Chen, Huang, Chen, Chen: "The Postembryonic Development of the Immunological Barrier in the Chicken Spleens." in: **Journal of immunology research**, Vol. 2019, pp. 6279360, (2019) ([PubMed](#)).



**Image 1.**



**Immunofluorescence**

**Image 2.** Frozen chicken ovary section was stained with Mouse Anti-Chicken CD3-UNLB