



Datasheet for ABIN1355059  
**GGT5 Protein (AA 1-587) (GST tag)**



[Go to Product page](#)

1 Image

Overview

Quantity:	25 µg
Target:	GGT5
Protein Characteristics:	AA 1-587
Origin:	Human
Source:	Wheat germ
Protein Type:	Recombinant
Purification tag / Conjugate:	This GGT5 protein is labelled with GST tag.
Application:	Western Blotting (WB), ELISA, Antibody Array (AA), Affinity Purification (AP)

Product Details

Purpose:	GGT5 (Human) Recombinant Protein (P01)
Sequence:	MARGYGATVS LVLLGLGLAL AVIVLAVVLS RHQAPCGPQA FAHAAVAADS KVCSDIGRAI LQQQGSPVDA TIAALVCTSV VNPQSMGLGG GVIFTIYNVT TGKVEVINAR ETVPASHAPS LLDQCAQALP LGTGAQWIGV PGELRGYAEA HRRHGRLPWA QLFQPTIAL RGGHVVPVPL SRFLHNSILR PSLQASTLRQ LFFNGTEPLR PQDPLPWPAL ATTLETVATE GVEVFYTGRL GQMLVEDIAK EGSQTLQDL AKFQPEVVDA LEVPLGDYTL YSPPPPAGGA ILSFILNVLR GFNFSTESMA RPEGRNVVYH HLVETLKFAK GQRWRLGDPR SHPKLQNASR DLLGETLAQL IRQQIDGRGD HQLSHYSLAE AWGHGTGTSH VSVLGEDGSA VAATSTINTP FGAMVYSPRT GIILNNELLD LCERCPRGSG TTPSPAVSGD RVGGAPGRCW PPVPGERSPS SMVPSILINK AQGSKLVIGG AGGELIISAV AQAIMSKLWL GFDLRAAIAA PILHVNSKGC VEYEPNFSQE VQRGLQDRGQ NQTQRPFFLN VVQAVSQEGA CVYAVSDLRK SGEAAGY
Characteristics:	Human GGT5 full-length ORF ( AAH73999.1, 1 a.a. - 587 a.a.) recombinant protein with GST-

## Product Details

---

tag at N-terminal.

Purification: in vitro wheat germ expression system

## Target Details

---

Target: GGT5

Alternative Name: GGT5 ([GGT5 Products](#))

Background: Full Gene Name: gamma-glutamyltransferase 5  
Synonyms: DKFZp566O011,FLJ92733,GGT-REL,GGTLA1

Gene ID: 2687

## Application Details

---

Application Notes: Optimal working dilution should be determined by the investigator.

Comment: Preparation method: in vitro, wheat germ expression system  
Product Quality tested by: 12.5% SDS-PAGE Stained with Coomassie Blue.

Restrictions: For Research Use only

## Handling

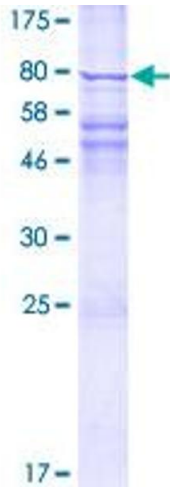
---

Buffer: 50 mM Tris-HCl, 10 mM reduced Glutathione, pH =8.0 in the elution buffer.

Handling Advice: Aliquot to avoid repeated freezing and thawing.

Storage: -80 °C

Storage Comment: Best use within three months from the date of receipt of this protein.



**Image 1.**