



[Go to Product page](#)

Datasheet for ABIN1355070

## GHDC Protein (AA 1-530) (GST tag)

### 1 Image

#### Overview

Quantity:	25 µg
Target:	GHDC
Protein Characteristics:	AA 1-530
Origin:	Human
Source:	Wheat germ
Protein Type:	Recombinant
Purification tag / Conjugate:	This GHDC protein is labelled with GST tag.
Application:	ELISA, Western Blotting (WB), Antibody Array (AA), Affinity Purification (AP)

#### Product Details

Purpose:	GHDC (Human) Recombinant Protein (P01)
Sequence:	MLLWPLLLLL LLLPTLALLR QQRSQDARLS WLAGLQHRVA WGALVWAATW QRRRLEQSTL HVHQSQQQAL RWCLQGAQRP HCSLRRSTDI STFRNHLPLT KASQTQQEDS GEQPLPPTSN QDLGEASLQA TLLGLAALNK AYPEVLAQGR TARVTLTSPW PRPLPWPGNT LGQVGTGPGTK DPRALLLDAL RSPGLRALEA GTAVELLDVF LGLETDGEEL AGAIAAGNPG APLRERAEL REALEQGPRG LALRLWPKLQ VVVTLDAGGQ AEAVAALGAL WCQGLAFFSP AYAASGGVLG LNLQPEQPHG LYLLPPGAPF IELLPVKEGT QEAASTLLL AEAQQGKEYE LVLTDRASLT RCRLGDVVRV VGAYNQCPVV RFICRLDQTL SVRGEDIGED LFSEALGRAV GQWAGAKLLD HGCVESSILD SSAGSAPHYE VFVALRGLRN LSEENRDKLD HCLQEASPRY KSLRFWGSVG PARVHLVGQG AFRALRAALA ACPSSPFPPA MPRVLRHRHL AQCLQERVVS
Characteristics:	Human GHDC full-length ORF ( NP_115873.1, 1 a.a. - 530 a.a.) recombinant protein with GST-tag at N-terminal.

## Product Details

---

Purification: in vitro wheat germ expression system

## Target Details

---

Target: GHDC

Alternative Name: GHDC ([GHDC Products](#))

Background: Full Gene Name: GH3 domain containing  
Synonyms: D11LGP1,LGP1

Gene ID: 84514

NCBI Accession: [NM\\_032484](#)

## Application Details

---

Application Notes: Optimal working dilution should be determined by the investigator.

Comment: Preparation method: in vitro, wheat germ expression system  
Product Quality tested by: 12.5% SDS-PAGE Stained with Coomassie Blue.

Restrictions: For Research Use only

## Handling

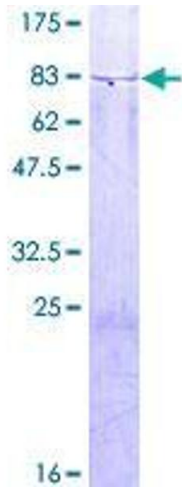
---

Buffer: 50 mM Tris-HCl, 10 mM reduced Glutathione, pH =8.0 in the elution buffer.

Handling Advice: Aliquot to avoid repeated freezing and thawing.

Storage: -80 °C

Storage Comment: Best use within three months from the date of receipt of this protein.



**Image 1.**