



[Go to Product page](#)

Datasheet for ABIN1355079

## GHRHR Protein (AA 23-132) (GST tag)

### 1 Image

#### Overview

Quantity:	10 µg
Target:	GHRHR
Protein Characteristics:	AA 23-132
Origin:	Human
Source:	Wheat germ
Protein Type:	Recombinant
Purification tag / Conjugate:	This GHRHR protein is labelled with GST tag.
Application:	Western Blotting (WB), ELISA, Antibody Array (AA), Affinity Purification (AP)

#### Product Details

Purpose:	GHRHR (Human) Recombinant Protein (Q01)
Sequence:	HMHPEDCFIT QLREDESACL QAAEEMPNTT LGCPATWDGL LCWPTAGSGE WVTLPDPDF SHFSSESGAV KRDCITGWS EPFPYPVAC PVPLELLAEE ESYFSTVKII
Characteristics:	Human GHRHR partial ORF ( NP_000814, 23 a.a. - 132 a.a.) recombinant protein with GST-tag at N-terminal.
Purification:	in vitro wheat germ expression system

#### Target Details

Target:	GHRHR
Alternative Name:	GHRHR ( <a href="#">GHRHR Products</a> )

## Target Details

Background:	Full Gene Name: growth hormone releasing hormone receptor Synonyms: GHRFR,GHRHRpsv,GRFR
Gene ID:	2692
NCBI Accession:	<a href="#">NM_000823</a>
Pathways:	<a href="#">Intracellular Steroid Hormone Receptor Signaling Pathway</a> , <a href="#">Hormone Transport</a> , <a href="#">Regulation of Intracellular Steroid Hormone Receptor Signaling</a> , <a href="#">cAMP Metabolic Process</a>

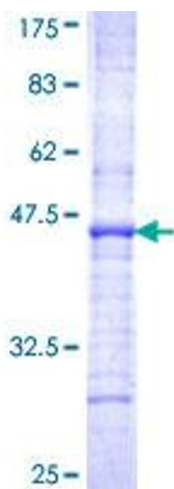
## Application Details

Application Notes:	Optimal working dilution should be determined by the investigator.
Comment:	Preparation method: in vitro, wheat germ expression system Product Quality tested by: 12.5% SDS-PAGE Stained with Coomassie Blue.
Restrictions:	For Research Use only

## Handling

Buffer:	50 mM Tris-HCl, 10 mM reduced Glutathione, pH =8.0 in the elution buffer.
Handling Advice:	Aliquot to avoid repeated freezing and thawing.
Storage:	-80 °C
Storage Comment:	Best use within three months from the date of receipt of this protein.

## Images



**Image 1.**