



Datasheet for ABIN1355081

## Ghrelin Protein (GHRL) (AA 1-117) (GST tag)



[Go to Product page](#)

### 1 Image

#### Overview

Quantity:	10 µg
Target:	Ghrelin (GHRL)
Protein Characteristics:	AA 1-117
Origin:	Human
Source:	Wheat germ
Protein Type:	Recombinant
Purification tag / Conjugate:	This Ghrelin protein is labelled with GST tag.
Application:	Western Blotting (WB), ELISA, Antibody Array (AA), Affinity Purification (AP)

#### Product Details

Purpose:	GHRL (Human) Recombinant Protein (P01)
Sequence:	MPSPGTVCSL LLLGMLWLDL AMAGSSFLSP EHQRVQQRKE SKKPPAKLQP RALAGWLRPE DGGQAE GAED EMEVRFNAPF DVGIKLSGVQ YQQHSQALGK FLQDILWEEA KEAPADK
Characteristics:	Human GHRL full-length ORF ( AAH25791.1, 1 a.a. - 117 a.a.) recombinant protein with GST-tag at N-terminal.
Purification:	in vitro wheat germ expression system

#### Target Details

Target:	Ghrelin (GHRL)
Alternative Name:	GHRL ( <a href="#">GHRL Products</a> )

## Target Details

Background:	Full Gene Name: ghrelin/obestatin prepropeptide Synonyms: MTLRP,obestatin
Gene ID:	51738
Pathways:	<a href="#">Positive Regulation of Peptide Hormone Secretion</a> , <a href="#">Hormone Transport</a> , <a href="#">Peptide Hormone Metabolism</a> , <a href="#">Negative Regulation of Hormone Secretion</a> , <a href="#">Synaptic Membrane</a> , <a href="#">Feeding Behaviour</a>

## Application Details

Application Notes:	Optimal working dilution should be determined by the investigator.
Comment:	Preparation method: in vitro, wheat germ expression system Product Quality tested by: 12.5% SDS-PAGE Stained with Coomassie Blue.
Restrictions:	For Research Use only

## Handling

Buffer:	50 mM Tris-HCl, 10 mM reduced Glutathione, pH =8.0 in the elution buffer.
Handling Advice:	Aliquot to avoid repeated freezing and thawing.
Storage:	-80 °C
Storage Comment:	Best use within three months from the date of receipt of this protein.

## Images

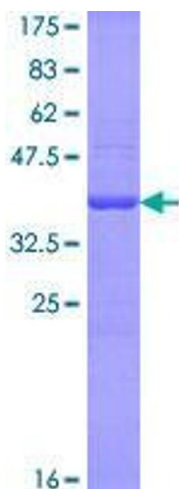


Image 1.