



[Go to Product page](#)

Datasheet for ABIN1355085

## GHSR Protein (AA 1-289) (GST tag)

### 1 Image

#### Overview

Quantity:	10 µg
Target:	GHSR
Protein Characteristics:	AA 1-289
Origin:	Human
Source:	Wheat germ
Protein Type:	Recombinant
Purification tag / Conjugate:	This GHSR protein is labelled with GST tag.
Application:	Western Blotting (WB), ELISA, Affinity Purification (AP), Antibody Array (AA)

#### Product Details

Purpose:	GHSR (Human) Recombinant Protein (P01)
Sequence:	MWNATPSEEP GFNLTLADLD WDASPGNSL GDELLQLFPA PLLAGVTATC VALFVVGIAG NLLTMLVVSFR FRELRTTNNL YLSSMAFSDL LIFLCMPLDL VRLWQYRPWN FGDLLCKLFQ FVSECTYAT VLTITALSVE RYFAICFPLR AKVVVTKGRV KLVIFVIWAV AFCSAGPIFV LVGVEHENGTD PWDWTNECRP TEFAVRSGLL TVMVVWSSIF FFLPVFCLTV LYSLIGRKLW RRRRGDAVVG ASLRDQNHKQ TVKMLGGSQR ALRLSLAGPI LSLCCLPSL
Characteristics:	Human GHSR full-length ORF ( NP_004113.1, 1 a.a. - 289 a.a.) recombinant protein with GST-tag at N-terminal.
Purification:	in vitro wheat germ expression system

## Target Details

Target:	GHSR
Alternative Name:	GHSR ( <a href="#">GHSR Products</a> )
Background:	Full Gene Name: growth hormone secretagogue receptor Synonyms:
Gene ID:	2693
NCBI Accession:	<a href="#">NM_004122</a>
Pathways:	<a href="#">Hormone Transport</a> , <a href="#">Negative Regulation of Hormone Secretion</a> , <a href="#">Feeding Behaviour</a>

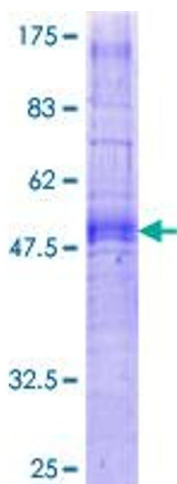
## Application Details

Application Notes:	Optimal working dilution should be determined by the investigator.
Comment:	Preparation method: in vitro, wheat germ expression system Product Quality tested by: 12.5% SDS-PAGE Stained with Coomassie Blue.
Restrictions:	For Research Use only

## Handling

Buffer:	50 mM Tris-HCl, 10 mM reduced Glutathione, pH =8.0 in the elution buffer.
Handling Advice:	Aliquot to avoid repeated freezing and thawing.
Storage:	-80 °C
Storage Comment:	Best use within three months from the date of receipt of this protein.

## Images



**Image 1.**