



[Go to Product page](#)

Datasheet for ABIN1355087

Intrinsic Factor Protein (AA 1-417) (GST tag)

1 Image

Overview

Quantity:	10 µg
Target:	Intrinsic Factor (GIF)
Protein Characteristics:	AA 1-417
Origin:	Human
Source:	Wheat germ
Protein Type:	Recombinant
Purification tag / Conjugate:	This Intrinsic Factor protein is labelled with GST tag.
Application:	Western Blotting (WB), ELISA, Antibody Array (AA), Affinity Purification (AP)

Product Details

Purpose:	GIF (Human) Recombinant Protein (P01)
Sequence:	MAWFALYLLS LLWATAGTST QTQSSCSVPS AQEPLVNGIQ VLMENSVTSS AYPNPSILIA MNLGAYNLK AQKLLTYQLM SSDNNDLTIG QLGLTIMALT SSCRDPGDKV SILQRQMENW APSSPNAEAS AFYGPLAIL ALCQKNSEAT LPIAVRFAKT LLANSSPFNV DTGAMATLAL TCMYNKIPVG SEEGYRSLFG QVLKDIVEKI SMKIKDNGII GDIYSTGLAM QALSVTPEPS KKEWNCKKTT DMILNEIKQG KFHNPMISIAQ ILPSLKGKTY LDVPQVTCSP DHEVQPTLPS NPGPGPTSAS NITVIYTINN QLRGVLLFN ETINVSVKSG SVLLVVLEEA QRKNPMFKFE TTMTSWGLVV SSINNIAENV NHKTYWQFLS GVTPLNEGVA DYIPFNHEHI TANFTQY
Characteristics:	Human GIF full-length ORF (NP_005133.2, 1 a.a. - 417 a.a.) recombinant protein with GST-tag at N-terminal.
Purification:	in vitro wheat germ expression system

Target Details

Target:	Intrinsic Factor (GIF)
Alternative Name:	GIF (GIF Products)
Background:	Full Gene Name: gastric intrinsic factor (vitamin B synthesis) Synonyms: IF,IFMH,INF,TCN3
Gene ID:	2694
NCBI Accession:	NM_005142

Application Details

Application Notes:	Optimal working dilution should be determined by the investigator.
Comment:	Preparation method: in vitro, wheat germ expression system Product Quality tested by: 12.5% SDS-PAGE Stained with Coomassie Blue.
Restrictions:	For Research Use only

Handling

Buffer:	50 mM Tris-HCl, 10 mM reduced Glutathione, pH =8.0 in the elution buffer.
Handling Advice:	Aliquot to avoid repeated freezing and thawing.
Storage:	-80 °C
Storage Comment:	Best use within three months from the date of receipt of this protein.

Images

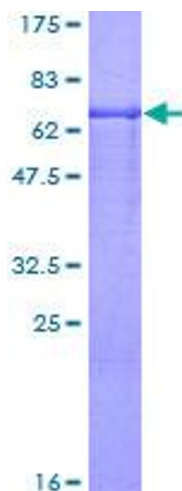


Image 1.